

Product datasheet for **TA378530S**

XTP4 (MIEN1) Rabbit Polyclonal Antibody

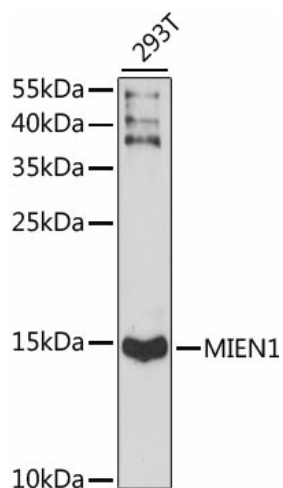
Product data:

Product Type:	Primary Antibodies
Applications:	ELISA, WB
Recommended Dilution:	WB, 1:200 - 1:2000 ELISA, Recommended starting concentration is 1 µg/mL. Please optimize the concentration based on your specific assay requirements.
Reactivity:	Human
Modifications:	Unmodified
Host:	Rabbit
Isotype:	IgG
Clonality:	Polyclonal
Formulation:	Buffer: PBS with 0.02% sodium azide, 50% glycerol, pH 7.3.
Concentration:	lot specific
Purification:	Affinity purification
Conjugation:	Unconjugated
Storage:	Store at -20°C. Avoid freeze / thaw cycles.
Stability:	Shelf life: one year from despatch.
Predicted Protein Size:	12kDa
Gene Name:	migration and invasion enhancer 1
Database Link:	Entrez Gene 84299 Human Q9BRT3
Background:	Involved in negative regulation of apoptotic process; positive regulation of cell migration; and positive regulation of filopodium assembly. Located in several cellular components, including centriolar satellite; cytosol; and nucleoplasm. Is intrinsic component of the cytoplasmic side of the plasma membrane.
Synonyms:	C17orf37; C35; ORB3; RDX12; XTP4



[View online »](#)

Product images:



Western blot analysis of lysates from 293T cells