

## Product datasheet for **TA378527S**

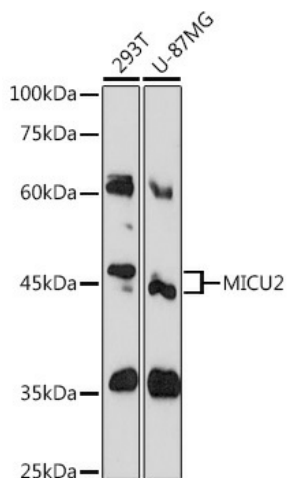
### EFHA1 (MICU2) Rabbit Polyclonal Antibody

#### Product data:

Product Type:	Primary Antibodies
Applications:	ELISA, WB
Recommended Dilution:	WB, 1:500 - 1:2000 ELISA, Recommended starting concentration is 1 µg/mL. Please optimize the concentration based on your specific assay requirements.
Reactivity:	Human
Modifications:	Unmodified
Host:	Rabbit
Isotype:	IgG
Clonality:	Polyclonal
Formulation:	PBS with 0.05% proclin300, 50% glycerol, pH7.3.
Concentration:	lot specific
Purification:	Affinity purification
Conjugation:	Unconjugated
Storage:	Store at -20°C. Avoid freeze / thaw cycles.
Stability:	Shelf life: one year from despatch.
Predicted Protein Size:	50kDa
Gene Name:	mitochondrial calcium uptake 2
Database Link:	<a href="#">Entrez Gene 221154 Human Q8IYU8</a>
Background:	Enables protein heterodimerization activity. Involved in calcium import into the mitochondrion and negative regulation of mitochondrial calcium ion concentration. Located in mitochondrial inner membrane and mitochondrial intermembrane space. Part of uniplex complex.
Synonyms:	1110008L20Rik; EFHA1



[View online »](#)

**Product images:**


Western blot analysis of various lysates using MICU2 Rabbit pAb (TA378527S) at 1:1000 dilution.

Secondary antibody: HRP-conjugated Goat anti-Rabbit IgG (H+L) (AS014) at 1:10000 dilution.

Lysates/proteins: 25µg per lane.

Blocking buffer: 3% nonfat dry milk in TBST.

Detection: ECL Basic Kit (RM00020).

Exposure time: 60s.