

## Product datasheet for **TA378515**

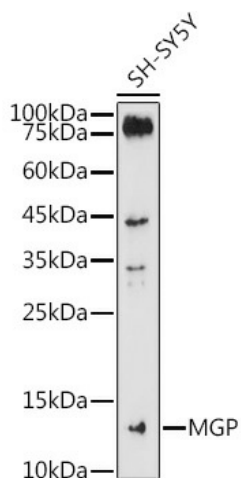
### MGP Rabbit Polyclonal Antibody

#### Product data:

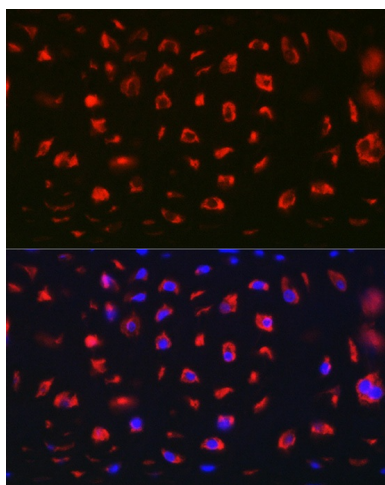
|                         |  |
|-------------------------|--|
| Product Type:           | Primary Antibodies   |
| Applications:           | ICC/IF, IHC, WB  |
| Recommended Dilution:   | WB,1:500 - 1:2000<br>IHC,1:100 - 1:200<br>IF,1:50 - 1:200  |
| Reactivity:             | Human, Mouse, Rat  |
| Modifications:          | Unmodified   |
| Host:                   | Rabbit   |
| Isotype:                | IgG  |
| Clonality:              | Polyclonal   |
| Immunogen:              | Recombinant fusion protein containing a sequence corresponding to amino acids 20-103 of human MGP (NP_000891.2).   |
| Formulation:            | Buffer: PBS with 0.02% sodium azide,50% glycerol,pH7.3.  |
| Concentration:          | lot specific   |
| Purification:           | Affinity purification  |
| Conjugation:            | Unconjugated   |
| Storage:                | Store at -20°C. Avoid freeze / thaw cycles.  |
| Stability:              | Shelf life: one year from despatch.  |
| Predicted Protein Size: | 12kDa/15kDa  |
| Gene Name:              | matrix Gla protein   |
| Database Link:          | <a href="#">Entrez Gene 4256 Human P08493</a>  |
| Background:             | The protein encoded by this gene is secreted and likely acts as an inhibitor of bone formation. The encoded protein is found in the organic matrix of bone and cartilage. Defects in this gene are a cause of Keutel syndrome (KS). Two transcript variants encoding different isoforms have been found for this gene. |
| Synonyms:               | GIG36; MGLAP; NTI  |



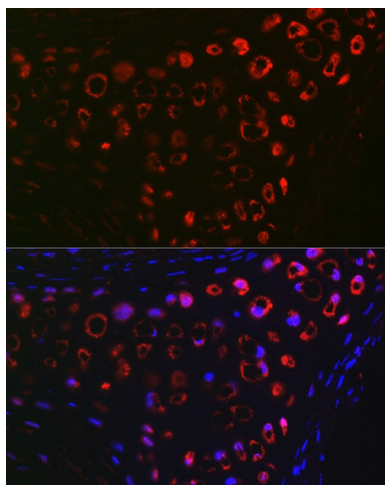
[View online »](#)

**Product images:**

Western blot analysis of extracts of SH-SY5Y cells, using MGP antibody (TA378515) at 1:1000 dilution. | Secondary antibody: HRP Goat Anti-Rabbit IgG (H+L) at 1:10000 dilution. | Lysates/proteins: 25ug per lane. | Blocking buffer: 3% nonfat dry milk in TBST. | Detection: ECL Basic Kit. | Exposure time: 180s.



Immunofluorescence analysis of Rat cartilage using MGP Rabbit pAb (TA378515) at dilution of 1:100 (40x lens). Blue: DAPI for nuclear staining.



Immunofluorescence analysis of Mouse cartilage using MGP Rabbit pAb (TA378515) at dilution of 1:100 (40x lens). Blue: DAPI for nuclear staining.