

Product datasheet for **TA378496**

Mitofusin 1 (MFN1) Rabbit Polyclonal Antibody

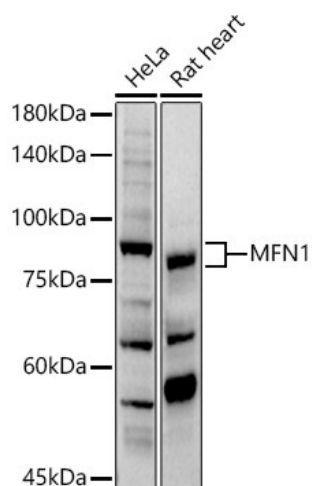
Product data:

Product Type:	Primary Antibodies
Applications:	ICC/IF, WB
Recommended Dilution:	WB,1:500 - 1:2000 IF,1:50 - 1:200
Reactivity:	Human, Mouse, Rat
Modifications:	Unmodified
Host:	Rabbit
Isotype:	IgG
Clonality:	Polyclonal
Immunogen:	Recombinant fusion protein containing a sequence corresponding to amino acids 622-741 of human MFN1 (NP_284941.2).
Formulation:	Buffer: PBS with 0.02% sodium azide,50% glycerol,pH7.3.
Concentration:	lot specific
Purification:	Affinity purification
Conjugation:	Unconjugated
Storage:	Store at -20°C. Avoid freeze / thaw cycles.
Stability:	Shelf life: one year from despatch.
Predicted Protein Size:	41kDa/71kDa/84kDa
Gene Name:	mitofusin 1
Database Link:	Entrez Gene 55669 Human Q8IWA4
Background:	The protein encoded by this gene is a mediator of mitochondrial fusion. This protein and mitofusin 2 are homologs of the Drosophila protein fuzzy onion (Fzo). They are mitochondrial membrane proteins that interact with each other to facilitate mitochondrial targeting.
Synonyms:	DKFZp762F247; FLJ20693; hfzo1; hfzo2; MGC41806

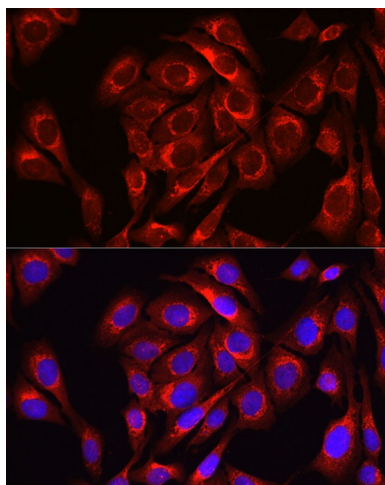


[View online »](#)

Product images:



Western blot analysis of extracts of various cell lines, using MFN1 antibody (TA378496) at 1:1000 dilution. | Secondary antibody: HRP Goat Anti-Rabbit IgG (H+L) at 1:10000 dilution. | Lysates/proteins: 25ug per lane. | Blocking buffer: 3% nonfat dry milk in TBST. | Detection: ECL Basic Kit. | Exposure time: 90s.



Immunofluorescence analysis of U2OS cells using MFN1 Rabbit pAb (TA378496) at dilution of 1:100 (40x lens). Blue: DAPI for nuclear staining.