

Product datasheet for **TA378493**

MFGE8 Rabbit Polyclonal Antibody

Product data:

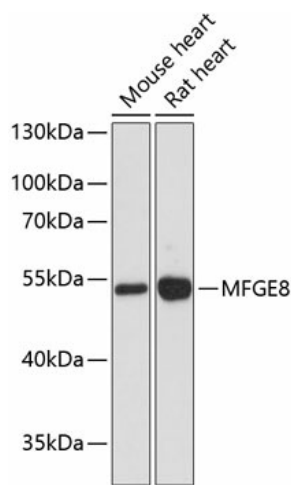
Product Type:	Primary Antibodies
Applications:	ICC/IF, IHC, WB
Recommended Dilution:	WB,1:500 - 1:2000 IHC,1:100 - 1:200 IF,1:50 - 1:200
Reactivity:	Human, Mouse, Rat
Modifications:	Unmodified
Host:	Rabbit
Isotype:	IgG
Clonality:	Polyclonal
Immunogen:	Recombinant fusion protein containing a sequence corresponding to amino acids 1-200 of human MFGE8 (NP_001108086.1).
Formulation:	Buffer: PBS with 0.01% thiomersal,50% glycerol,pH7.3.
Concentration:	lot specific
Purification:	Affinity purification
Conjugation:	Unconjugated
Storage:	Store at -20°C. Avoid freeze / thaw cycles.
Stability:	Shelf life: one year from despatch.
Predicted Protein Size:	35kDa/37kDa/43kDa
Gene Name:	milk fat globule-EGF factor 8 protein
Database Link:	Entrez Gene 4240 Human Q08431
Background:	This gene encodes a preproprotein that is proteolytically processed to form multiple protein products. The major encoded protein product, lactadherin, is a membrane glycoprotein that promotes phagocytosis of apoptotic cells. This protein has also been implicated in wound healing, autoimmune disease, and cancer. Lactadherin can be further processed to form a smaller cleavage product, medin, which comprises the major protein component of aortic medial amyloid (AMA). Alternative splicing results in multiple transcript variants.



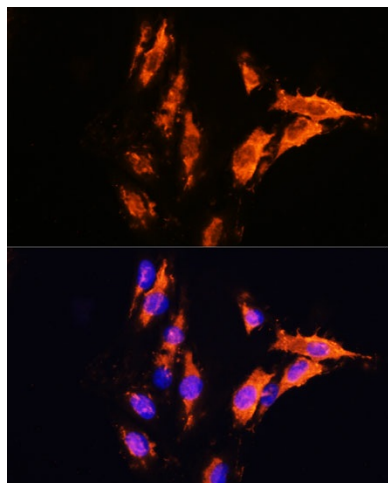
[View online »](#)

Synonyms: BA46; EDIL1; HMFG; hP47; HsT19888; lactadherin; medin; MFG-E8; MFGM; OAcGD3S; SED1; SPAG10

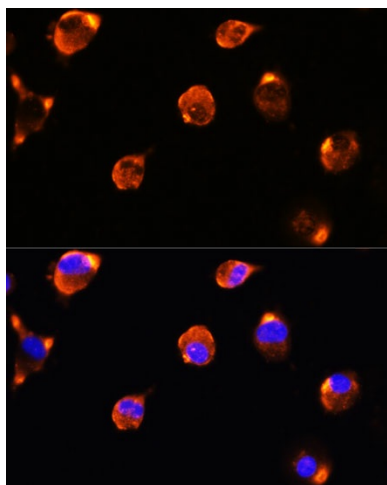
Product images:



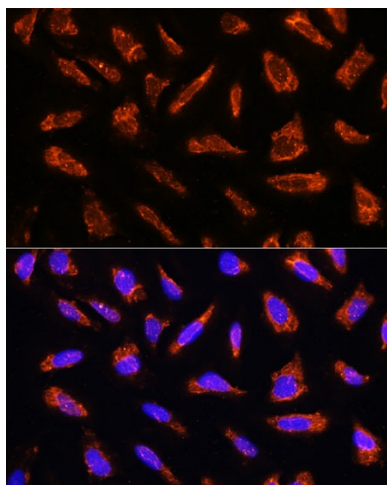
Western blot analysis of extracts of various cell lines, using MFGE8 antibody (TA378493) at 1:3000 dilution. | Secondary antibody: HRP Goat Anti-Rabbit IgG (H+L) at 1:10000 dilution. | Lysates/proteins: 25ug per lane. | Blocking buffer: 3% nonfat dry milk in TBST. | Detection: ECL Enhanced Kit. | Exposure time: 90s.



Immunofluorescence analysis of C6 cells using MFGE8 antibody (TA378493) at dilution of 1:100. Blue: DAPI for nuclear staining.



Immunofluorescence analysis of L929 cells using MFGE8 antibody (TA378493) at dilution of 1:100. Blue: DAPI for nuclear staining.



Immunofluorescence analysis of U-2 OS cells using MFGE8 antibody (TA378493) at dilution of 1:100. Blue: DAPI for nuclear staining.