

Product datasheet for **TA378489S**

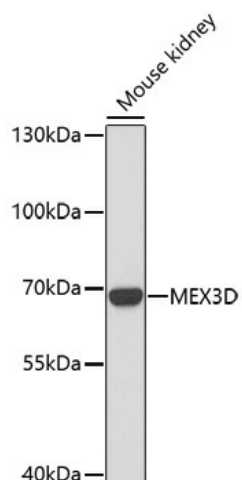
MEX3D Rabbit Polyclonal Antibody

Product data:

Product Type:	Primary Antibodies
Applications:	ELISA, WB
Recommended Dilution:	WB, 1:500 - 1:2000 ELISA, Recommended starting concentration is 1 µg/mL. Please optimize the concentration based on your specific assay requirements.
Reactivity:	Mouse
Host:	Rabbit
Isotype:	IgG
Clonality:	Polyclonal
Formulation:	Buffer: PBS with 0.02% sodium azide, 50% glycerol, pH 7.3.
Concentration:	lot specific
Purification:	Affinity purification
Conjugation:	Unconjugated
Storage:	Store at -20°C. Avoid freeze / thaw cycles.
Stability:	Shelf life: one year from despatch.
Predicted Protein Size:	65kDa
Gene Name:	mex-3 RNA binding family member D
Database Link:	Q86XN8
Background:	Enables mRNA 3'-UTR AU-rich region binding activity. Located in nucleus and perinuclear region of cytoplasm.
Synonyms:	KIAA2031; MEX-3D; MEX3; OK/SW-cl.4; RKHD1; RNF193; Tino

[View online »](#)

Product images:



Western blot analysis of lysates from mouse kidney