

## Product datasheet for **TA378487**

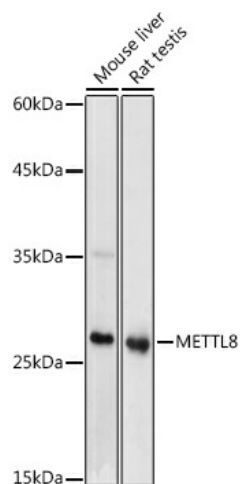
### **METTL8 Rabbit Polyclonal Antibody**

#### **Product data:**

Product Type:	Primary Antibodies
Applications:	WB
Recommended Dilution:	WB,1:500 - 1:2000
Reactivity:	Human, Mouse, Rat
Modifications:	Unmodified
Host:	Rabbit
Isotype:	IgG
Clonality:	Polyclonal
Immunogen:	Recombinant protein of human METTL8.
Formulation:	Buffer: PBS with 0.02% sodium azide,50% glycerol,pH7.3.
Concentration:	lot specific
Purification:	Affinity purification
Conjugation:	Unconjugated
Storage:	Store at -20°C. Avoid freeze / thaw cycles.
Stability:	Shelf life: one year from despatch.
Predicted Protein Size:	33kDa
Gene Name:	methyltransferase like 8
Database Link:	<a href="#">Entrez Gene 79828 Human Q9H825</a>
Background:	S-adenosyl-L-methionine-dependent methyltransferase that mediates N(3-methylcytidine modification of mRNAs.
Synonyms:	FLJ13334; FLJ13984; FLJ31054; FLJ42098; FLJ77788; TIP



[View online »](#)

**Product images:**

Western blot analysis of extracts of various cell lines, using METTL8 antibody (TA378487) at 1:1000 dilution. | Secondary antibody: HRP Goat Anti-Rabbit IgG (H+L) at 1:10000 dilution. | Lysates/proteins: 25ug per lane. | Blocking buffer: 3% nonfat dry milk in TBST. | Detection: ECL Basic Kit . | Exposure time: 10s.