

## Product datasheet for **TA378486**

### **METTL7B Rabbit Polyclonal Antibody**

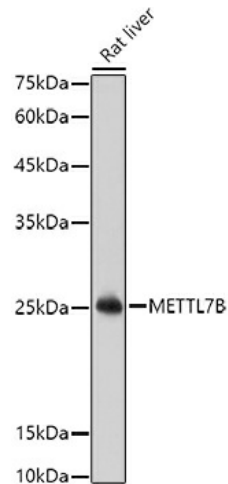
#### **Product data:**

|                         |   |
|-------------------------|---|
| Product Type:           | Primary Antibodies  |
| Applications:           | ICC/IF, WB  |
| Recommended Dilution:   | WB,1:500 - 1:2000<br>IF,1:50 - 1:100  |
| Reactivity:             | Human, Mouse, Rat   |
| Modifications:          | Unmodified  |
| Host:                   | Rabbit  |
| Isotype:                | IgG   |
| Clonality:              | Polyclonal  |
| Immunogen:              | Recombinant fusion protein containing a sequence corresponding to amino acids 55-244 of human METTL7B (NP_689850.2).  |
| Formulation:            | Buffer: PBS with 0.02% sodium azide,50% glycerol,pH7.3.   |
| Concentration:          | lot specific  |
| Purification:           | Affinity purification   |
| Conjugation:            | Unconjugated  |
| Storage:                | Store at -20°C. Avoid freeze / thaw cycles.   |
| Stability:              | Shelf life: one year from despatch.   |
| Predicted Protein Size: | 27kDa   |
| Gene Name:              | methyltransferase like 7B   |
| Database Link:          | <a href="#">Entrez Gene 196410 Human Q6UX53</a>   |
| Background:             | Thiol S-methyltransferase that catalyzes the transfer of a methyl group from S-adenosyl-L-methionine to hydrogen sulfide and other thiol compounds including dithiothreitol, 7alpha-thiospirocholone, L-penicillamine, and captopril. |
| Synonyms:               | MGC17301  |

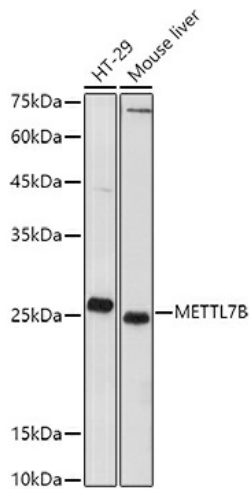


[View online »](#)

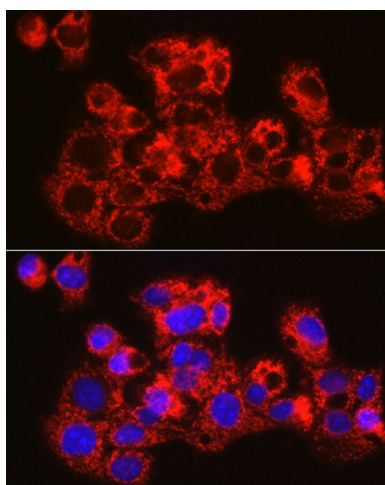
## Product images:



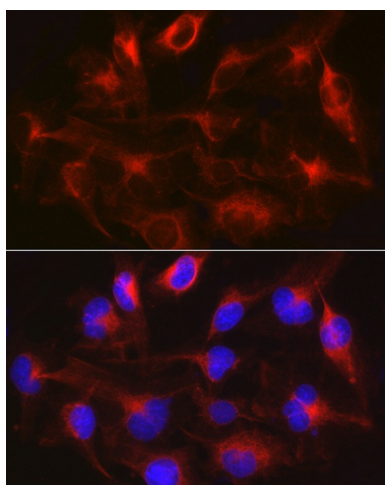
Western blot analysis of extracts of Rat liver, using METTL7B antibody (TA378486) at 1:1000 dilution. | Secondary antibody: HRP Goat Anti-Rabbit IgG (H+L) at 1:10000 dilution. | Lysates/proteins: 25ug per lane. | Blocking buffer: 3% nonfat dry milk in TBST. | Detection: ECL Basic Kit . | Exposure time: 10s.



Western blot analysis of extracts of various cell lines, using METTL7B antibody (TA378486) at 1:1000 dilution. | Secondary antibody: HRP Goat Anti-Rabbit IgG (H+L) at 1:10000 dilution. | Lysates/proteins: 25ug per lane. | Blocking buffer: 3% nonfat dry milk in TBST. | Detection: ECL Basic Kit . | Exposure time: 180s.



Immunofluorescence analysis of HepG2 cells using METTL7B Rabbit pAb (TA378486) at dilution of 1:100 (40x lens). Blue: DAPI for nuclear staining.



Immunofluorescence analysis of U-251MG cells using METTL7B Rabbit pAb (TA378486) at dilution of 1:100 (40x lens). Blue: DAPI for nuclear staining.