

## Product datasheet for **TA378485**

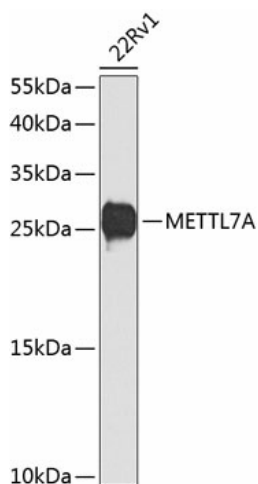
### **METTL7A Rabbit Polyclonal Antibody**

#### **Product data:**

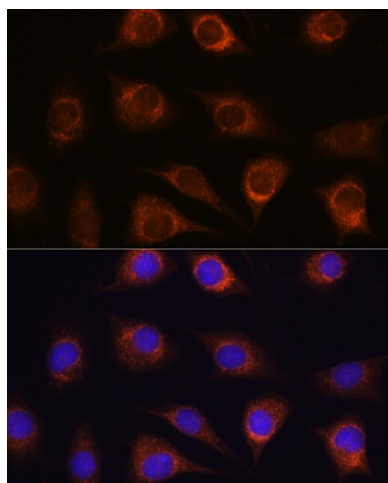
|                         |  |
|-------------------------|--|
| Product Type:           | Primary Antibodies   |
| Applications:           | ICC/IF, IHC, WB  |
| Recommended Dilution:   | WB,1:500 - 1:2000<br>IHC,1:50 - 1:200<br>IF,1:50 - 1:200   |
| Reactivity:             | Human, Mouse, Rat  |
| Modifications:          | Unmodified   |
| Host:                   | Rabbit   |
| Isotype:                | IgG  |
| Clonality:              | Polyclonal   |
| Immunogen:              | Recombinant fusion protein containing a sequence corresponding to amino acids 30-244 of human METTL7A (NP_054752.3). |
| Formulation:            | Buffer: PBS with 0.02% sodium azide,50% glycerol,pH7.3.  |
| Concentration:          | lot specific   |
| Purification:           | Affinity purification  |
| Conjugation:            | Unconjugated   |
| Storage:                | Store at -20°C. Avoid freeze / thaw cycles.  |
| Stability:              | Shelf life: one year from despatch.  |
| Predicted Protein Size: | 28kDa  |
| Gene Name:              | methyltransferase like 7A  |
| Database Link:          | <a href="#">Entrez Gene 25840 Human Q9H8H3</a>   |
| Background:             | Probable methyltransferase.  |
| Synonyms:               | AAM-B; DKFZP586A0522   |



[View online »](#)

**Product images:**

Western blot analysis of extracts of 22Rv1 cells, using METTL7A antibody (TA378485) at 1:1000 dilution. | Secondary antibody: HRP Goat Anti-Rabbit IgG (H+L) at 1:10000 dilution. | Lysates/proteins: 25ug per lane. | Blocking buffer: 3% nonfat dry milk in TBST. | Detection: ECL Basic Kit . | Exposure time: 90s.



Immunofluorescence analysis of L929 cells using METTL7A Rabbit pAb (TA378485) at dilution of 1:100. Blue: DAPI for nuclear staining.