

## Product datasheet for **TA378484S**

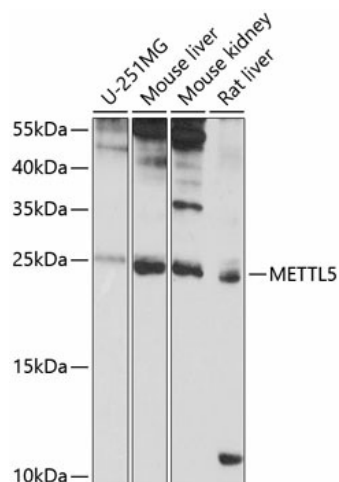
### Methyltransferase like 5 (METTL5) Rabbit Polyclonal Antibody

#### Product data:

Product Type:	Primary Antibodies
Applications:	ELISA, WB
Recommended Dilution:	WB, 1:500 - 1:2000 ELISA, Recommended starting concentration is 1 µg/mL. Please optimize the concentration based on your specific assay requirements.
Reactivity:	Human, Mouse, Rat
Modifications:	Unmodified
Host:	Rabbit
Isotype:	IgG
Clonality:	Polyclonal
Formulation:	Buffer: PBS with 0.02% sodium azide, 50% glycerol, pH 7.3.
Concentration:	lot specific
Purification:	Affinity purification
Conjugation:	Unconjugated
Storage:	Store at -20°C. Avoid freeze / thaw cycles.
Stability:	Shelf life: one year from despatch.
Predicted Protein Size:	24kDa
Gene Name:	methyltransferase like 5
Database Link:	<a href="#">Entrez Gene 29081 Human Q9NRN9</a>
Background:	Enables S-adenosyl-L-methionine binding activity and rRNA (adenine-N6-)-methyltransferase activity. Involved in positive regulation of translation and rRNA methylation. Located in nucleus; postsynapse; and presynapse. Implicated in autosomal recessive intellectual developmental disorder-72.
Synonyms:	FLJ10459; HSPC133; OTTHUMP00000205106



[View online »](#)

**Product images:**


Western blot analysis of various lysates using METTL5 Rabbit pAb (TA378484) at 1:1000 dilution.

Secondary antibody: HRP-conjugated Goat anti-Rabbit IgG (H+L) (AS014) at 1:10000 dilution.

Lysates/proteins: 25µg per lane.

Blocking buffer: 3% nonfat dry milk in TBST.

Detection: ECL Basic Kit (RM00020).

Exposure time: 8s.