

Product datasheet for **TA378484**

Methyltransferase like 5 (METTL5) Rabbit Polyclonal Antibody

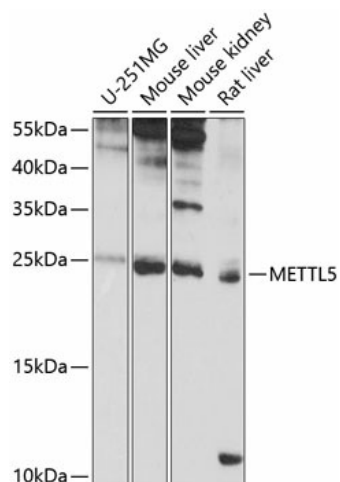
Product data:

| | |
|-------------------------|---|
| Product Type: | Primary Antibodies |
| Applications: | WB |
| Recommended Dilution: | WB,1:500 - 1:2000 |
| Reactivity: | Human, Mouse, Rat |
| Modifications: | Unmodified |
| Host: | Rabbit |
| Isotype: | IgG |
| Clonality: | Polyclonal |
| Immunogen: | Recombinant fusion protein containing a sequence corresponding to amino acids 1-209 of human METTL5 (NP_054887.2). |
| Formulation: | Buffer: PBS with 0.02% sodium azide,50% glycerol,pH7.3. |
| Concentration: | lot specific |
| Purification: | Affinity purification |
| Conjugation: | Unconjugated |
| Storage: | Store at -20°C. Avoid freeze / thaw cycles. |
| Stability: | Shelf life: one year from despatch. |
| Predicted Protein Size: | 23kDa |
| Gene Name: | methyltransferase like 5 |
| Database Link: | Entrez Gene 29081 Human Q9NRN9 |
| Background: | Catalytic subunit of a heterodimer with TRMT112, which specifically methylates the 6th position of adenine in position 1832 of 18S rRNA. N6-methylation of adenine(1832 in 18S rRNA resides in the decoding center of 18S rRNA and is required for translation and embryonic stem cells (ESCs pluripotency and differentiation. |
| Synonyms: | FLJ10459; HSPC133; OTTHUMP00000205106 |



[View online »](#)

Product images:



Western blot analysis of extracts of various cell lines, using METTL5 antibody (TA378484) at 1:1000 dilution. | Secondary antibody: HRP Goat Anti-Rabbit IgG (H+L) at 1:10000 dilution. | Lysates/proteins: 25ug per lane. | Blocking buffer: 3% nonfat dry milk in TBST. | Detection: ECL Basic Kit . | Exposure time: 8s.