

## Product datasheet for **TA378481**

### **METTL2B Rabbit Polyclonal Antibody**

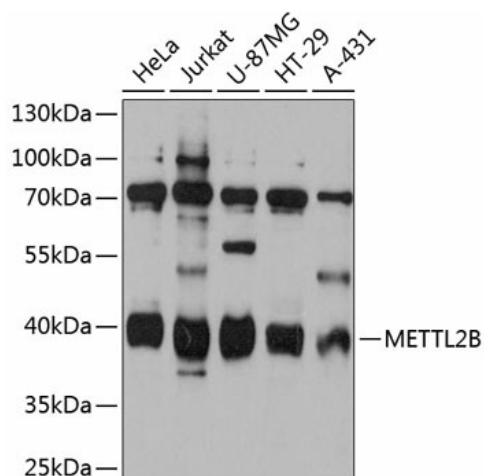
#### **Product data:**

<b>Product Type:</b>	Primary Antibodies
<b>Applications:</b>	WB
<b>Recommended Dilution:</b>	WB,1:500 - 1:2000
<b>Reactivity:</b>	Human
<b>Modifications:</b>	Unmodified
<b>Host:</b>	Rabbit
<b>Isotype:</b>	IgG
<b>Clonality:</b>	Polyclonal
<b>Immunogen:</b>	Recombinant fusion protein containing a sequence corresponding to amino acids 100-250 of human METTL2B (NP_060866.2).
<b>Formulation:</b>	Buffer: PBS with 0.02% sodium azide,50% glycerol,pH7.3.
<b>Concentration:</b>	lot specific
<b>Purification:</b>	Affinity purification
<b>Conjugation:</b>	Unconjugated
<b>Storage:</b>	Store at -20°C. Avoid freeze / thaw cycles.
<b>Stability:</b>	Shelf life: one year from despatch.
<b>Predicted Protein Size:</b>	36kDa/43kDa
<b>Gene Name:</b>	methyltransferase like 2B
<b>Database Link:</b>	<a href="#">Entrez Gene 55798 Human Q6P1Q9</a>
<b>Background:</b>	This gene is a member of a family of methyltransferases that share homology with, but are distinct from, the UbiE family of methyltransferases. Alternatively spliced variants which encode different protein isoforms have been described; however, not all variants have been fully characterized.
<b>Synonyms:</b>	FLJ11350; FLJ12760; METL; METTL2; METTL2A; PSENIP1



[View online »](#)

## Product images:



Western blot analysis of extracts of various cell lines, using METTL2B antibody (TA378481) at 1:3000 dilution. | Secondary antibody: HRP Goat Anti-Rabbit IgG (H+L) at 1:10000 dilution. | Lysates/proteins: 25ug per lane. | Blocking buffer: 3% nonfat dry milk in TBST. | Detection: ECL Basic Kit. | Exposure time: 90s.