

## Product datasheet for **TA378475**

### **KIAA0859 (METTL13) Rabbit Polyclonal Antibody**

#### **Product data:**

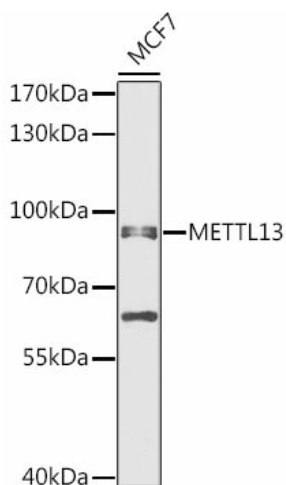
<b>Product Type:</b>	Primary Antibodies
<b>Applications:</b>	ICC/IF, WB
<b>Recommended Dilution:</b>	WB, 1:500 - 1:2000 IF, 1:50 - 1:100
<b>Reactivity:</b>	Human
<b>Modifications:</b>	Unmodified
<b>Host:</b>	Rabbit
<b>Isotype:</b>	IgG
<b>Clonality:</b>	Polyclonal
<b>Immunogen:</b>	Recombinant fusion protein containing a sequence corresponding to amino acids 430-699 of human METTL13 (NP_057019.3).
<b>Formulation:</b>	Buffer: PBS with 0.02% sodium azide, 50% glycerol, pH 7.3.
<b>Concentration:</b>	lot specific
<b>Purification:</b>	Affinity purification
<b>Conjugation:</b>	Unconjugated
<b>Storage:</b>	Store at -20°C. Avoid freeze / thaw cycles.
<b>Stability:</b>	Shelf life: one year from despatch.
<b>Predicted Protein Size:</b>	44kDa/61kDa/68kDa/72kDa/78kDa
<b>Gene Name:</b>	methyltransferase like 13
<b>Database Link:</b>	<a href="#">Entrez Gene 51603 Human Q8N6R0</a>
<b>Background:</b>	Dual methyltransferase that catalyzes methylation of elongation factor 1-alpha (EEF1A1 and EEF1A2) at two different positions, and is therefore involved in the regulation of mRNA translation. Via its C-terminus, methylates EEF1A1 and EEF1A2 at the N-terminal residue 'Gly-2'. Via its N-terminus dimethylates EEF1A1 and EEF1A2 at residue 'Lys-55'. Has no activity towards core histones H2A, H2B, H3 and H4. Negatively regulates cell proliferation at G1/S transition via transcriptional suppression of cell cycle regulatory genes such as CDK4 and CDK6.



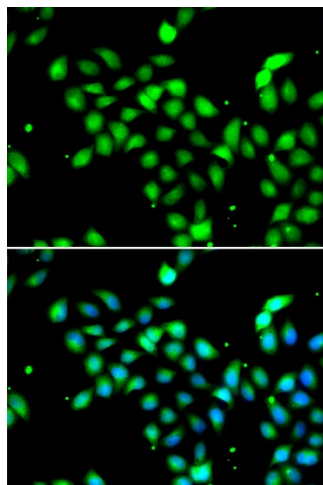
[View online »](#)

Synonyms: 5630401D24Rik; CGI-01; feat; FLJ10310; KIAA0859

### Product images:



Western blot analysis of extracts of MCF7 cells, using METTL13 antibody (TA378475) at 1:1000 dilution. | Secondary antibody: HRP Goat Anti-Rabbit IgG (H+L) at 1:10000 dilution. | Lysates/proteins: 25ug per lane. | Blocking buffer: 3% nonfat dry milk in TBST. | Detection: ECL Enhanced Kit . | Exposure time: 30s.



Immunofluorescence analysis of A549 cells using METTL13 antibody (TA378475). Blue: DAPI for nuclear staining.