

Product datasheet for TA378474S

Methionine Aminopeptidase 2 (METAP2) Rabbit Polyclonal Antibody

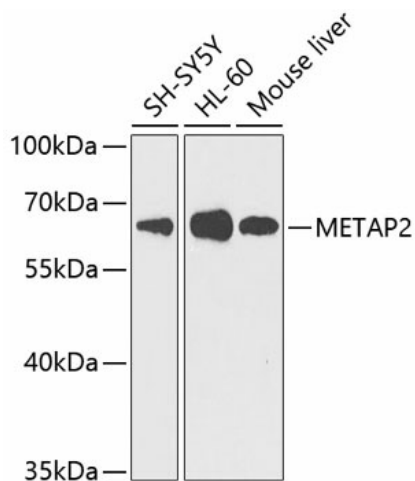
Product data:

Product Type:	Primary Antibodies
Applications:	ELISA, WB
Recommended Dilution:	WB, 1:200 - 1:2000 ELISA, Recommended starting concentration is 1 µg/mL. Please optimize the concentration based on your specific assay requirements.
Reactivity:	Human, Mouse
Modifications:	Unmodified
Host:	Rabbit
Isotype:	IgG
Clonality:	Polyclonal
Formulation:	Buffer: PBS with 0.02% sodium azide, 50% glycerol, pH 7.3.
Concentration:	lot specific
Purification:	Affinity purification
Conjugation:	Unconjugated
Storage:	Store at -20°C. Avoid freeze / thaw cycles.
Stability:	Shelf life: one year from despatch.
Predicted Protein Size:	53kDa
Gene Name:	methionyl aminopeptidase 2
Database Link:	Entrez Gene 10988 Human P50579
Background:	The protein encoded by this gene is a member of the methionyl aminopeptidase family. The encoded protein functions both by protecting the alpha subunit of eukaryotic initiation factor 2 from inhibitory phosphorylation and by removing the amino-terminal methionine residue from nascent proteins. Increased expression of this gene is associated with various forms of cancer, and the anti-cancer drugs fumagillin and ovalicin inhibit the protein by irreversibly binding to its active site. Inhibitors of this gene have also been shown to be effective for the treatment of obesity. A pseudogene of this gene is located on chromosome 2. Several transcript variants encoding different isoforms have been found for this gene.


[View online »](#)

Synonyms: MAP2; MNPEP; p67; p67eIF2

Product images:



Western blot analysis of various lysates using METAP2 Rabbit pAb (TA378474S) at 1:1000 dilution.

Secondary antibody: HRP-conjugated Goat anti-Rabbit IgG (H+L) (AS014) at 1:10000 dilution.

Lysates/proteins: 25µg per lane.

Blocking buffer: 3% nonfat dry milk in TBST.

Detection: ECL Basic Kit (RM00020).

Exposure time: 90s.