

## Product datasheet for **TA378465**

### S Protein Rabbit Polyclonal Antibody

#### Product data:

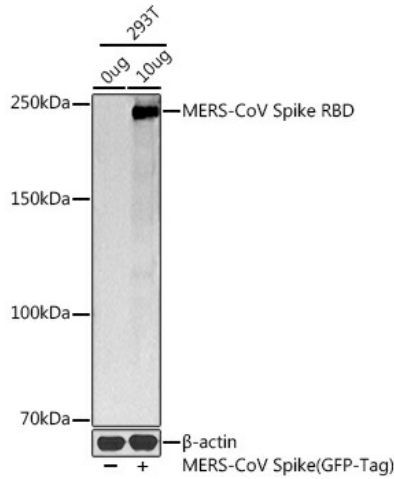
|                         |   |
|-------------------------|---|
| Product Type:           | Primary Antibodies                                      |
| Applications:           | ICC/IF, WB  |
| Recommended Dilution:   | WB,1:500 - 1:2000<br>IF,1:50 - 1:200                    |
| Reactivity:             | Human   |
| Modifications:          | Unmodified  |
| Host:                   | Rabbit  |
| Isotype:                | IgG   |
| Clonality:              | Polyclonal  |
| Immunogen:              | Recombinant protein of Coronavirus MERS-CoV Spike RBD.  |
| Formulation:            | Buffer: PBS with 0.02% sodium azide,50% glycerol,pH7.3. |
| Concentration:          | lot specific  |
| Purification:           | Affinity purification                                   |
| Conjugation:            | Unconjugated  |
| Storage:                | Store at -20°C. Avoid freeze / thaw cycles.             |
| Stability:              | Shelf life: one year from despatch.                     |
| Predicted Protein Size: | 149kDa  |
| Database Link:          | <a href="#">K9N5Q8</a>                                  |

**Background:** It's been reported that Coronavirus can infect the human respiratory epithelial cells through interaction with the human ACE2 receptor. The spike protein is a large type I transmembrane protein containing two subunits, S1 and S2. S1 mainly contains a receptor binding domain (RBD), which is responsible for recognizing the cell surface receptor. S2 contains basic elements needed for the membrane fusion. The S protein plays key parts in the induction of neutralizing-antibody and T-cell responses, as well as protective immunity.

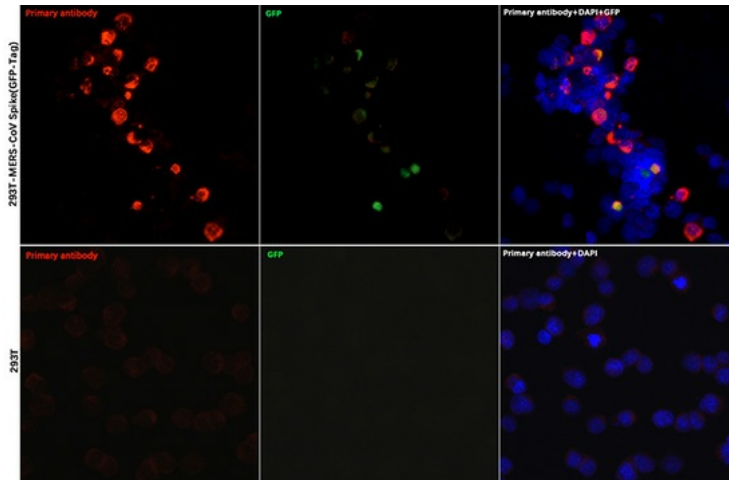


[View online »](#)

Product images:



Western blot analysis of extracts of various cell lines, using MERS-CoV Spike RBD antibody (TA378465) at 1:1000 dilution. |Secondary antibody: HRP Goat Anti-Rabbit IgG (H+L) at 1:10000 dilution. |Lysates/proteins: 25ug per lane. |Blocking buffer: 3% nonfat dry milk in TBST. |Detection: ECL Basic Kit . |Exposure time: 1s.



Immunofluorescence analysis of 293T cells transfected with MERS-CoV Spike(GFP-Tag) protein and untreated 293T cells use MERS-CoV Spike RBD Rabbit pAb (TA378465) at dilution of 1:200 (40x lens). Blue: DAPI for nuclear staining.