

## Product datasheet for TA378463S

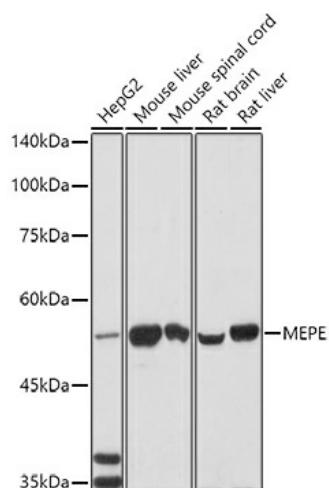
### MEPE Rabbit Polyclonal Antibody

#### Product data:

Product Type:	Primary Antibodies
Applications:	ELISA, WB
Recommended Dilution:	WB, 1:500 - 1:1000 ELISA, Recommended starting concentration is 1 µg/mL. Please optimize the concentration based on your specific assay requirements.
Reactivity:	Human, Mouse, Rat
Modifications:	Unmodified
Host:	Rabbit
Isotype:	IgG
Clonality:	Polyclonal
Formulation:	Buffer: PBS with 0.02% sodium azide, 50% glycerol, pH 7.3.
Concentration:	lot specific
Purification:	Affinity purification
Conjugation:	Unconjugated
Storage:	Store at -20°C. Avoid freeze / thaw cycles.
Stability:	Shelf life: one year from despatch.
Predicted Protein Size:	58kDa
Gene Name:	matrix extracellular phosphoglycoprotein
Database Link:	<a href="#">Entrez Gene 56955 Human Q9NQ76</a>
Background:	This gene encodes a secreted calcium-binding phosphoprotein that belongs to the small integrin-binding ligand, N-linked glycoprotein (SIBLING) family of proteins. Members of this family are components of the extracellular matrix of bone and dentin and regulate bone mineralization. Deficiency of a similar protein in mouse results in increased bone mass. Mice lacking this gene are resistant to aging-related trabecular bone loss. Alternative splicing results in multiple transcript variants.
Synonyms:	OF45


[View online »](#)

## Product images:



Western blot analysis of various lysates using MEPE Rabbit pAb ([TA378463]) at 1:1000 dilution. Secondary antibody: HRP-conjugated Goat anti-Rabbit IgG (H+L) (AS014) at 1:10000 dilution. Lysates/proteins: 25µg per lane. Blocking buffer: 3% nonfat dry milk in TBST. Detection: ECL Basic Kit (RM00020). Exposure time: 90s.