

Product datasheet for **TA378448**

MEF2B Rabbit Polyclonal Antibody

Product data:

Product Type:	Primary Antibodies
Applications:	WB
Recommended Dilution:	WB,1:500 - 1:2000
Reactivity:	Human
Modifications:	Unmodified
Host:	Rabbit
Isotype:	IgG
Clonality:	Polyclonal
Immunogen:	A synthetic peptide corresponding to a sequence within amino acids 1-100 of human MEF2B (NP_005910.1).
Formulation:	Buffer: PBS with 0.02% sodium azide,50% glycerol,pH7.3.
Concentration:	lot specific
Purification:	Affinity purification
Conjugation:	Unconjugated
Storage:	Store at -20°C. Avoid freeze / thaw cycles.
Stability:	Shelf life: one year from despatch.
Predicted Protein Size:	38kDa/39kDa
Gene Name:	myocyte enhancer factor 2B
Database Link:	Entrez Gene 100271849 Human Q02080

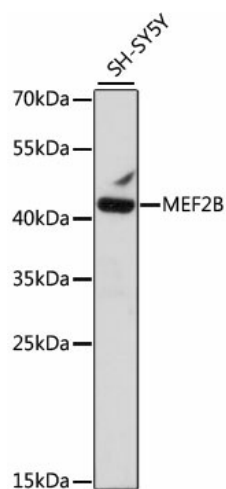
Background: The product of this gene is a member of the MADS/MEF2 family of DNA binding proteins. The protein is thought to regulate gene expression, including expression of the smooth muscle myosin heavy chain gene. This region undergoes considerable alternative splicing, with transcripts supporting two non-overlapping loci (GeneID 729991 and 100271849) as well as numerous read-through transcripts that span both loci (annotated as GeneID 4207). Several isoforms of this protein are expressed from either this locus or from some of the read-through transcripts annotated on GeneID 4207.



[View online »](#)

Synonyms: FLJ32648; RSRFR2; XMEF2

Product images:



Western blot analysis of extracts of SH-SY5Y cells, using MEF2B antibody (TA378448) at 1:1000 dilution. | Secondary antibody: HRP Goat Anti-Rabbit IgG (H+L) at 1:10000 dilution. | Lysates/proteins: 25ug per lane. | Blocking buffer: 3% nonfat dry milk in TBST. | Detection: ECL Basic Kit . | Exposure time: 3min.