

## Product datasheet for **TA378431**

### MED19 Rabbit Polyclonal Antibody

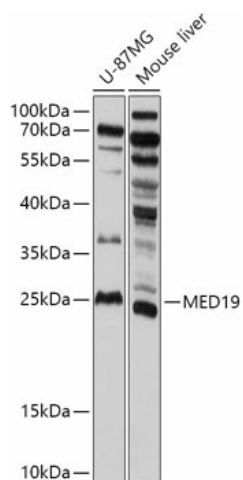
#### Product data:

Product Type:	Primary Antibodies
Applications:	WB
Recommended Dilution:	WB,1:500 - 1:2000
Reactivity:	Human, Mouse
Modifications:	Unmodified
Host:	Rabbit
Isotype:	IgG
Clonality:	Polyclonal
Immunogen:	Recombinant fusion protein containing a sequence corresponding to amino acids 60-160 of human MED19 (NP_703151.1).
Formulation:	Buffer: PBS with 0.02% sodium azide,50% glycerol,pH7.3.
Concentration:	lot specific
Purification:	Affinity purification
Conjugation:	Unconjugated
Storage:	Store at -20°C. Avoid freeze / thaw cycles.
Stability:	Shelf life: one year from despatch.
Predicted Protein Size:	20kDa/26kDa
Gene Name:	mediator complex subunit 19
Database Link:	<a href="#">Entrez Gene 219541 Human A0JLT2</a>
Background:	The protein encoded by this gene is a subunit of the Mediator complex, which binds to gene-specific regulatory factors and provides support for the basal RNA polymerase II transcription machinery. This gene has been implicated in the growth of several types of cancer, and inhibition of its expression inhibits the growth and spread of these cancers. Two transcript variants encoding different isoforms have been found for this gene. [provided by RefSeq, Nov 2015]
Synonyms:	DT2P1G7; LCMR1



[View online »](#)

## Product images:



Western blot analysis of extracts of various cell lines, using MED19 antibody (TA378431) at 1:1000 dilution. | Secondary antibody: HRP Goat Anti-Rabbit IgG (H+L) at 1:10000 dilution. | Lysates/proteins: 25ug per lane. | Blocking buffer: 3% nonfat dry milk in TBST. | Detection: ECL Basic Kit . | Exposure time: 90s.