

Product datasheet for **TA378420**

MDM2 Rabbit Polyclonal Antibody

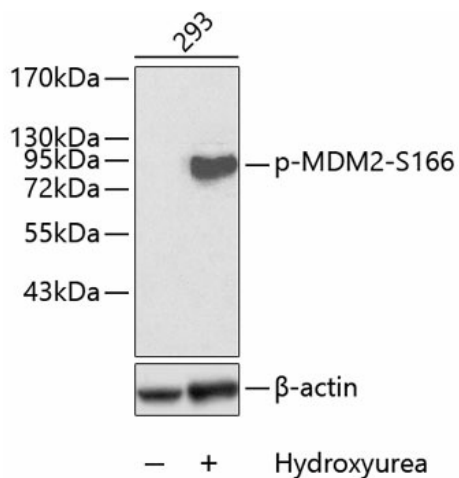
Product data:

| | |
|-------------------------|--|
| Product Type: | Primary Antibodies |
| Applications: | WB |
| Recommended Dilution: | WB,1:500 - 1:1000 |
| Reactivity: | Human, Mouse, Rat |
| Modifications: | Phospho S166 |
| Host: | Rabbit |
| Isotype: | IgG |
| Clonality: | Polyclonal |
| Immunogen: | A synthetic phosphorylated peptide around S166 of human MDM2 (NP_002383.2). |
| Formulation: | Buffer: PBS with 0.02% sodium azide,50% glycerol,pH7.3. |
| Concentration: | lot specific |
| Purification: | Affinity purification |
| Conjugation: | Unconjugated |
| Storage: | Store at -20°C. Avoid freeze / thaw cycles. |
| Stability: | Shelf life: one year from despatch. |
| Predicted Protein Size: | 11-14kDa/24-55kDa |
| Gene Name: | MDM2 proto-oncogene |
| Database Link: | Entrez Gene 4193 Human Q00987 |
| Background: | This gene encodes a nuclear-localized E3 ubiquitin ligase. The encoded protein can promote tumor formation by targeting tumor suppressor proteins, such as p53, for proteasomal degradation. This gene is itself transcriptionally-regulated by p53. Overexpression or amplification of this locus is detected in a variety of different cancers. There is a pseudogene for this gene on chromosome 2. Alternative splicing results in a multitude of transcript variants, many of which may be expressed only in tumor cells. |
| Synonyms: | Hdm2; HDMX; MGC5370; MGC71221; OTTHUMP00000183495 |



[View online »](#)

Product images:



Western blot analysis of extracts of 293 cells, using Phospho-MDM2-S166 antibody (TA378420). 293 cells were treated by Hydroxyurea (4mM) for 20 hours. | Secondary antibody: HRP Goat Anti-Rabbit IgG (H+L) at 1:10000 dilution. | Lysates/proteins: 25ug per lane. | Blocking buffer: 3% BSA.