

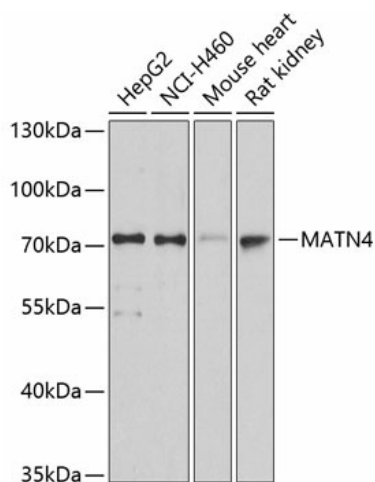
Product datasheet for **TA378362S**

Matrilin 4 (MATN4) Rabbit Polyclonal Antibody

Product data:

Product Type:	Primary Antibodies
Applications:	ELISA, WB
Recommended Dilution:	WB, 1:500 - 1:2000 ELISA, Recommended starting concentration is 1 µg/mL. Please optimize the concentration based on your specific assay requirements.
Reactivity:	Human, Mouse, Rat
Modifications:	Unmodified
Host:	Rabbit
Isotype:	IgG
Clonality:	Polyclonal
Formulation:	Buffer: PBS with 0.02% sodium azide, 50% glycerol, pH 7.3.
Concentration:	lot specific
Purification:	Affinity purification
Conjugation:	Unconjugated
Storage:	Store at -20°C. Avoid freeze / thaw cycles.
Stability:	Shelf life: one year from despatch.
Predicted Protein Size:	68kDa
Gene Name:	matrilin 4
Database Link:	Entrez Gene 8785 Human O95460
Background:	This gene encodes a member of von Willebrand factor A domain-containing protein family. The proteins of this family are thought to be involved in the formation of filamentous networks in the extracellular matrices of various tissues. This family member is thought to play a role in reorganizing and regenerating the corneal matrix in granular and lattice type I dystrophies. It may also be involved in wound healing in the dentin-pulp complex. Alternative splicing results in multiple transcript variants.
Synonyms:	FLJ14417; HE6WCR54; OTTHUMP00000031671


[View online »](#)

Product images:


Western blot analysis of various lysates using MATN4 Rabbit pAb (TA378362) at 1:3000 dilution.

Secondary antibody: HRP-conjugated Goat anti-Rabbit IgG (H+L) (AS014) at 1:10000 dilution.

Lysates/proteins: 25µg per lane.

Blocking buffer: 3% nonfat dry milk in TBST.

Detection: ECL Basic Kit (RM00020).

Exposure time: 10s.