

## Product datasheet for **TA378362**

### Matrilin 4 (MATN4) Rabbit Polyclonal Antibody

#### Product data:

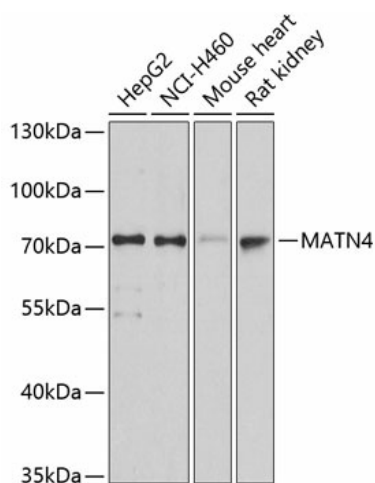
Product Type:	Primary Antibodies
Applications:	WB
Recommended Dilution:	WB,1:500 - 1:2000 IHC,1:100 - 1:200
Reactivity:	Human, Mouse, Rat
Modifications:	Unmodified
Host:	Rabbit
Isotype:	IgG
Clonality:	Polyclonal
Immunogen:	Recombinant fusion protein containing a sequence corresponding to amino acids 221-540 of human MATN4 (NP_085080.1).
Formulation:	Buffer: PBS with 0.02% sodium azide,50% glycerol,pH7.3.
Concentration:	lot specific
Purification:	Affinity purification
Conjugation:	Unconjugated
Storage:	Store at -20°C. Avoid freeze / thaw cycles.
Stability:	Shelf life: one year from despatch.
Predicted Protein Size:	47kDa/59kDa/64kDa/68kDa
Gene Name:	matrilin 4
Database Link:	<a href="#">Entrez Gene 8785 Human O95460</a>
Background:	This gene encodes a member of von Willebrand factor A domain-containing protein family. The proteins of this family are thought to be involved in the formation of filamentous networks in the extracellular matrices of various tissues. This family member is thought to be play a role in reorganizing and regenerating the corneal matrix in granular and lattice type I dystrophies. It may also be involved in wound healing in the dentin-pulp complex. Alternative splicing results in multiple transcript variants.



[View online »](#)

Synonyms: FLJ14417; HE6WCR54; OTTHUMP00000031671

### Product images:



Western blot analysis of extracts of various cell lines, using MATN4 antibody (TA378362) at 1:3000 dilution. | Secondary antibody: HRP Goat Anti-Rabbit IgG (H+L) at 1:10000 dilution. | Lysates/proteins: 25ug per lane. | Blocking buffer: 3% nonfat dry milk in TBST. | Detection: ECL Basic Kit . | Exposure time: 10s.