

## Product datasheet for **TA378350S**

### MAS1L Rabbit Polyclonal Antibody

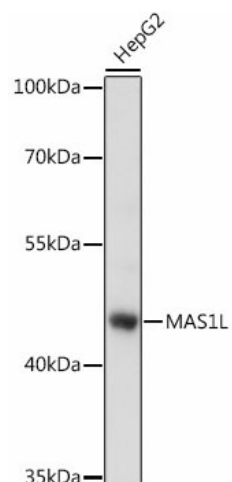
#### Product data:

Product Type:	Primary Antibodies
Applications:	ELISA, WB
Recommended Dilution:	WB, 1:500 - 1:2000 ELISA, Recommended starting concentration is 1 µg/mL. Please optimize the concentration based on your specific assay requirements.
Reactivity:	Human
Modifications:	Unmodified
Host:	Rabbit
Isotype:	IgG
Clonality:	Polyclonal
Formulation:	Buffer: PBS with 0.02% sodium azide, 50% glycerol, pH 7.3.
Concentration:	lot specific
Purification:	Affinity purification
Conjugation:	Unconjugated
Storage:	Store at -20°C. Avoid freeze / thaw cycles.
Stability:	Shelf life: one year from despatch.
Predicted Protein Size:	42kDa
Gene Name:	MAS1 proto-oncogene like, G protein-coupled receptor
Database Link:	<a href="#">Entrez Gene 116511 Human P35410</a>
Background:	Predicted to enable G protein-coupled receptor activity. Predicted to be involved in G protein-coupled receptor signaling pathway. Located in cytosol; nucleoplasm; and plasma membrane.
Synonyms:	dj994E9.2; MAS-L; MAS-R; MAS1-like; MGC119987; MRG



[View online »](#)

## Product images:



Western blot analysis of lysates from HepG2 cells