

Product datasheet for **TA378347S**

MARVELD1 Rabbit Polyclonal Antibody

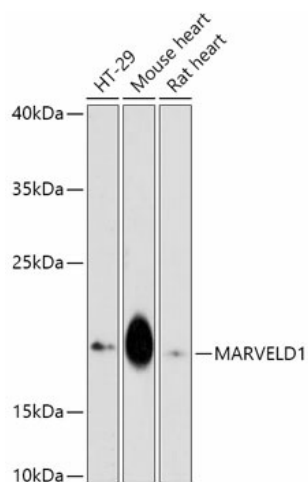
Product data:

Product Type:	Primary Antibodies
Applications:	ELISA, WB
Recommended Dilution:	WB, 1:500 - 1:2000 ELISA, Recommended starting concentration is 1 µg/mL. Please optimize the concentration based on your specific assay requirements.
Reactivity:	Human, Mouse, Rat
Modifications:	Unmodified
Host:	Rabbit
Isotype:	IgG
Clonality:	Polyclonal
Formulation:	Buffer: PBS with 0.02% sodium azide, 50% glycerol, pH 7.3.
Concentration:	lot specific
Purification:	Affinity purification
Conjugation:	Unconjugated
Storage:	Store at -20°C. Avoid freeze / thaw cycles.
Stability:	Shelf life: one year from despatch.
Predicted Protein Size:	19kDa
Gene Name:	MARVEL domain containing 1
Database Link:	Entrez Gene 83742 Human Q9BSK0
Background:	Predicted to be a structural constituent of myelin sheath. Predicted to be involved in myelination. Predicted to be located in several cellular components, including cytoskeleton; nucleus; and plasma membrane. Predicted to be integral component of membrane.
Synonyms:	bA548K23.8; FLJ22343; FLJ23440; GB14; MARVD1; MGC4415; MRVLDC1; RP11-548K23.8



[View online »](#)

Product images:



Western blot analysis of various lysates using MARVELD1 Rabbit pAb (TA378347) at 1:1000 dilution.

Secondary antibody: HRP-conjugated Goat anti-Rabbit IgG (H+L) (AS014) at 1:10000 dilution.

Lysates/proteins: 25µg per lane.

Blocking buffer: 3% nonfat dry milk in TBST.

Detection: ECL Enhanced Kit (RM00021).

Exposure time: 300s.