

## Product datasheet for **TA378344**

### MARK2 Rabbit Polyclonal Antibody

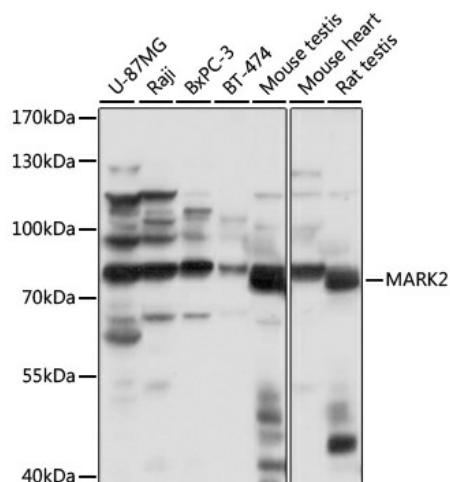
#### Product data:

Product Type:	Primary Antibodies
Applications:	ICC/IF, WB
Recommended Dilution:	WB,1:500 - 1:2000 IF,1:50 - 1:100
Reactivity:	Human, Mouse, Rat
Modifications:	Unmodified
Host:	Rabbit
Isotype:	IgG
Clonality:	Polyclonal
Immunogen:	Recombinant protein of human MARK2
Formulation:	Buffer: PBS with 0.02% sodium azide,50% glycerol,pH7.3.
Concentration:	lot specific
Purification:	Affinity purification
Conjugation:	Unconjugated
Storage:	Store at -20°C. Avoid freeze / thaw cycles.
Stability:	Shelf life: one year from despatch.
Predicted Protein Size:	77-87kDa
Gene Name:	microtubule affinity regulating kinase 2
Database Link:	<a href="#">Entrez Gene 2011 Human Q7KZ17</a>
Background:	This gene encodes a member of the Par-1 family of serine/threonine protein kinases. The protein is an important regulator of cell polarity in epithelial and neuronal cells, and also controls the stability of microtubules through phosphorylation and inactivation of several microtubule-associated proteins. The protein localizes to cell membranes. Multiple transcript variants encoding different isoforms have been found for this gene.
Synonyms:	EMK1; MGC99619; PAR-1; Par1b

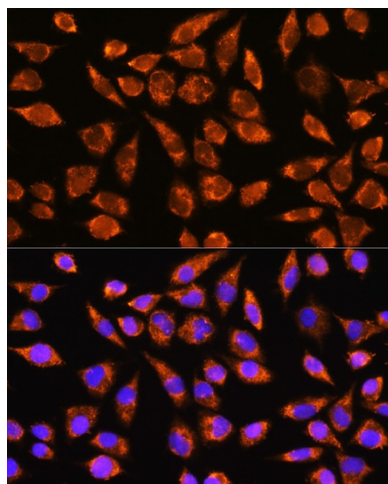


[View online »](#)

## Product images:



Western blot analysis of extracts of various cell lines, using MARK2 antibody (TA378344) at 1:1000 dilution. | Secondary antibody: HRP Goat Anti-Rabbit IgG (H+L) at 1:10000 dilution. | Lysates/proteins: 25ug per lane. | Blocking buffer: 3% nonfat dry milk in TBST. | Detection: ECL Basic Kit . | Exposure time: 1s.



Immunofluorescence analysis of L929 cells using MARK2 antibody (TA378344) at dilution of 1:100. Blue: DAPI for nuclear staining.