

Product datasheet for **TA378340S**

Tau (MAPT) Rabbit Polyclonal Antibody

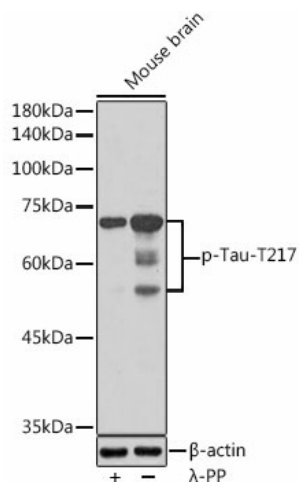
Product data:

| | |
|-------------------------|---|
| Product Type: | Primary Antibodies |
| Applications: | WB |
| Recommended Dilution: | WB,1:500 - 1:2000 |
| Reactivity: | Human, Mouse, Rat |
| Modifications: | Phospho T217 |
| Host: | Rabbit |
| Isotype: | IgG |
| Clonality: | Polyclonal |
| Immunogen: | A phospho synthetic peptide corresponding to residues surrounding T217 of Human Tau. |
| Formulation: | Buffer: PBS with 0.02% sodium azide,50% glycerol,pH7.3. |
| Concentration: | lot specific |
| Purification: | Affinity purification |
| Conjugation: | Unconjugated |
| Storage: | Store at -20°C. Avoid freeze / thaw cycles. |
| Stability: | Shelf life: one year from despatch. |
| Predicted Protein Size: | 32-45kDa/78- 80kDa |
| Gene Name: | microtubule associated protein tau |
| Database Link: | Entrez Gene 4137 Human P10636-5 |
| Background: | This gene encodes the microtubule-associated protein tau (MAPT) whose transcript undergoes complex, regulated alternative splicing, giving rise to several mRNA species. MAPT transcripts are differentially expressed in the nervous system, depending on stage of neuronal maturation and neuron type. MAPT gene mutations have been associated with several neurodegenerative disorders such as Alzheimer's disease, Pick's disease, frontotemporal dementia, cortico-basal degeneration and progressive supranuclear palsy. |
| Synonyms: | DDPAC; FLJ31424; FTDP-17; MAPTL; MGC138549; MSTD; MTBT1; MTBT2; PHF-tau; PPND; TAU |



[View online »](#)

Product images:



Western blot analysis of extracts of Mouse brain, using Phospho-Tau-T217 antibody ([TA378340]) at 1:1000 dilution. Mouse brain were treated by λ -PP mixed solution (1ul) at 30°C for 30 minutes. | Secondary antibody: HRP Goat Anti-Rabbit IgG (H+L) at 1:10000 dilution. | Lysates/proteins: 25ug per lane. | Blocking buffer: 3% nonfat dry milk in TBST. | Detection: ECL Basic Kit . | Exposure time: 90s.