

## Product datasheet for **TA378337S**

### Tau (MAPT) Rabbit Polyclonal Antibody

#### Product data:

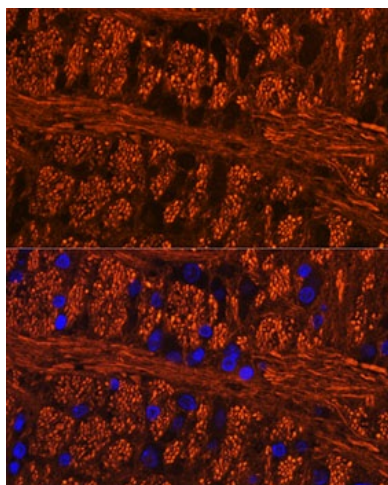
Product Type:	Primary Antibodies
Applications:	ICC/IF, WB
Recommended Dilution:	WB,1:500 - 1:2000 IF,1:50 - 1:200
Reactivity:	Human, Mouse, Rat
Modifications:	Phospho Ser404
Host:	Rabbit
Isotype:	IgG
Clonality:	Polyclonal
Immunogen:	A phospho specific peptide corresponding to residues surrounding Ser404 of human Tau.
Formulation:	Buffer: PBS with 0.02% sodium azide,50% glycerol,pH7.3.
Concentration:	lot specific
Purification:	Affinity purification
Conjugation:	Unconjugated
Storage:	Store at -20°C. Avoid freeze / thaw cycles.
Stability:	Shelf life: one year from despatch.
Predicted Protein Size:	32-45kDa/78- 80kDa
Gene Name:	microtubule associated protein tau
Database Link:	<a href="#">Entrez Gene 4137 Human P10636</a>
Background:	This gene encodes the microtubule-associated protein tau (MAPT) whose transcript undergoes complex, regulated alternative splicing, giving rise to several mRNA species. MAPT transcripts are differentially expressed in the nervous system, depending on stage of neuronal maturation and neuron type. MAPT gene mutations have been associated with several neurodegenerative disorders such as Alzheimer's disease, Pick's disease, frontotemporal dementia, cortico-basal degeneration and progressive supranuclear palsy. [provided by RefSeq, Jul 2008]



[View online »](#)

Synonyms: DDPAC; FLJ31424; FTDP-17; MAPTL; MGC138549; MSTD; MTBT1; MTBT2; PHF-tau; PPND; TAU

**Product images:**



Immunofluorescence analysis of Rat brain using Phospho-Tau-Ser404 Rabbit pAb ([TA378337]) at dilution of 1:100. Blue: DAPI for nuclear staining.