

## Product datasheet for **TA378333**

### Tau (MAPT) Rabbit Polyclonal Antibody

#### Product data:

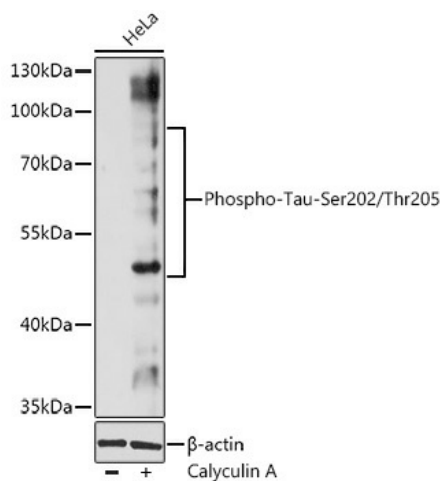
Product Type:	Primary Antibodies
Applications:	WB
Recommended Dilution:	WB,1:500 - 1:2000 IF,1:50 - 1:100
Reactivity:	Human, Mouse
Modifications:	Phospho S519/T522
Host:	Rabbit
Isotype:	IgG
Clonality:	Polyclonal
Immunogen:	A phospho specific peptide corresponding to residues surrounding Ser202/Thr205 of human Tau
Formulation:	Buffer: PBS with 0.02% sodium azide,50% glycerol,pH7.3.
Concentration:	lot specific
Purification:	Affinity purification
Conjugation:	Unconjugated
Storage:	Store at -20°C. Avoid freeze / thaw cycles.
Stability:	Shelf life: one year from despatch.
Predicted Protein Size:	32-45kDa/78- 80kDa
Gene Name:	microtubule associated protein tau
Database Link:	<a href="#">Entrez Gene 4137 Human P10636</a>
Background:	This gene encodes the microtubule-associated protein tau (MAPT) whose transcript undergoes complex, regulated alternative splicing, giving rise to several mRNA species. MAPT transcripts are differentially expressed in the nervous system, depending on stage of neuronal maturation and neuron type. MAPT gene mutations have been associated with several neurodegenerative disorders such as Alzheimer's disease, Pick's disease, frontotemporal dementia, cortico-basal degeneration and progressive supranuclear palsy.



[View online »](#)

Synonyms: DDPAC; FLJ31424; FTDP-17; MAPTL; MGC138549; MSTD; MTBT1; MTBT2; PHF-tau; PPND; TAU

### Product images:



Western blot analysis of extracts of HeLa cells, using Phospho-Tau-Ser202/Thr205 antibody (TA378333) at 1:1000 dilution. HeLa cells were treated by Calyculin A (100 nM) at 37°C for 30 minutes after serum-starvation overnight. | Secondary antibody: HRP Goat Anti-Rabbit IgG (H+L) at 1:10000 dilution. | Lysates/proteins: 25ug per lane. | Blocking buffer: 3% nonfat dry milk in TBST. | Detection: ECL Basic Kit. | Exposure time: 60s.