

## Product datasheet for **TA378292**

### ERK2 (MAPK1) Rabbit Polyclonal Antibody

#### Product data:

Product Type:	Primary Antibodies
Applications:	ICC/IF, WB
Recommended Dilution:	WB,1:1000 - 1:2000 IF,1:100 - 1:200
Reactivity:	Human, Mouse, Rat
Modifications:	Unmodified
Host:	Rabbit
Isotype:	IgG
Clonality:	Polyclonal
Immunogen:	Recombinant Protein of human MAPK1/MAPK3
Formulation:	Buffer: PBS with 0.02% sodium azide,50% glycerol,pH7.3.
Concentration:	lot specific
Purification:	Affinity purification
Conjugation:	Unconjugated
Storage:	Store at -20°C. Avoid freeze / thaw cycles.
Stability:	Shelf life: one year from despatch.
Predicted Protein Size:	36kDa/38kDa/40kDa/41kDa/43kDa
Gene Name:	mitogen-activated protein kinase 1
Database Link:	<a href="#">Entrez Gene 5594 Human P28482</a>

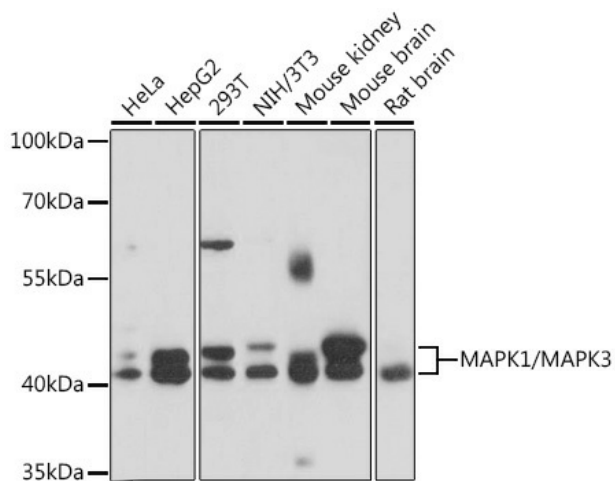
**Background:** MAP kinases, also known as extracellular signal-regulated kinases (ERKs), act as an integration point for multiple biochemical signals, and are involved in a wide variety of cellular processes such as proliferation, differentiation, transcription regulation and development. The activation of this kinase requires its phosphorylation by upstream kinases. Upon activation, this kinase translocates to the nucleus of the stimulated cells, where it phosphorylates nuclear targets.



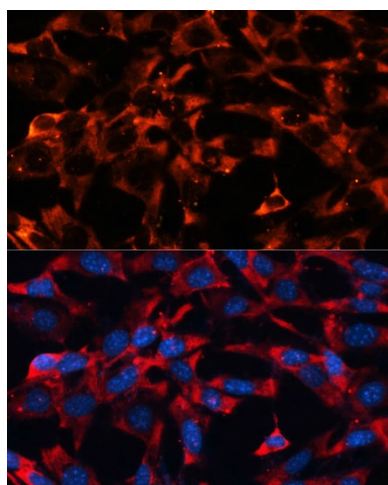
[View online »](#)

**Synonyms:** ERK; ERK-2; ERK2; ERT1; MAPK2; p38; p40; p41; p41 mapk; p42-MAPK; P42MAPK; PRKM1; PRKM2

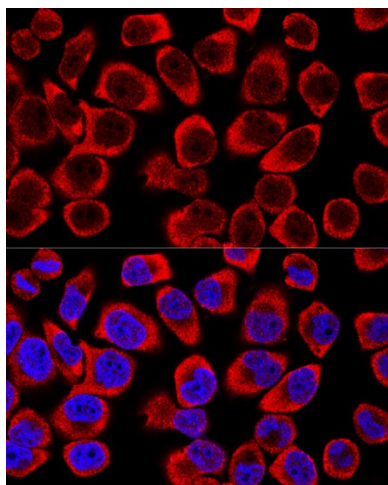
**Product images:**



Western blot analysis of extracts of various cell lines, using MAPK1/MAPK3 antibody (TA378292) at 1:1000 dilution. | Secondary antibody: HRP Goat Anti-Rabbit IgG (H+L) at 1:10000 dilution. | Lysates/proteins: 25ug per lane. | Blocking buffer: 3% nonfat dry milk in TBST. | Detection: ECL Basic Kit . | Exposure time: 10s.



Immunofluorescence analysis of NIH-3T3 cells using MAPK1/MAPK3 Polyclonal Antibody (TA378292) at dilution of 1:100 (40x lens). Blue: DAPI for nuclear staining.



Confocal immunofluorescence analysis of HeLa cells using MAPK1/MAPK3 Polyclonal Antibody (TA378292) at dilution of 1:200. Blue: DAPI for nuclear staining.