

Product datasheet for **TA378290**

ERK2 (MAPK1) Rabbit Polyclonal Antibody

Product data:

Product Type:	Primary Antibodies
Applications:	ICC/IF, IHC, WB
Recommended Dilution:	WB,1:500 - 1:2000 IHC,1:50 - 1:200 IF,1:50 - 1:200
Reactivity:	Human, Mouse, Rat
Modifications:	Unmodified
Host:	Rabbit
Isotype:	IgG
Clonality:	Polyclonal
Immunogen:	A synthetic peptide corresponding to a sequence within amino acids 200-300 of human ERK2 (NP_620407.1).
Formulation:	Buffer: PBS with 0.02% sodium azide,50% glycerol,pH7.3.
Concentration:	lot specific
Purification:	Affinity purification
Conjugation:	Unconjugated
Storage:	Store at -20°C. Avoid freeze / thaw cycles.
Stability:	Shelf life: one year from despatch.
Predicted Protein Size:	36kDa/41kDa
Gene Name:	mitogen-activated protein kinase 1
Database Link:	Entrez Gene 5594 Human P28482



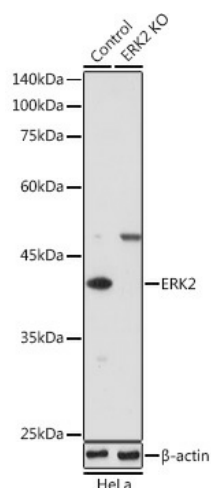
[View online »](#)

Background:

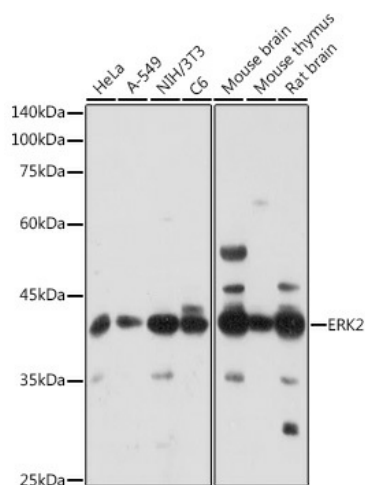
This gene encodes a member of the MAP kinase family. MAP kinases, also known as extracellular signal-regulated kinases (ERKs), act as an integration point for multiple biochemical signals, and are involved in a wide variety of cellular processes such as proliferation, differentiation, transcription regulation and development. The activation of this kinase requires its phosphorylation by upstream kinases. Upon activation, this kinase translocates to the nucleus of the stimulated cells, where it phosphorylates nuclear targets. One study also suggests that this protein acts as a transcriptional repressor independent of its kinase activity. The encoded protein has been identified as a moonlighting protein based on its ability to perform mechanistically distinct functions. Two alternatively spliced transcript variants encoding the same protein, but differing in the UTRs, have been reported for this gene.

Synonyms:

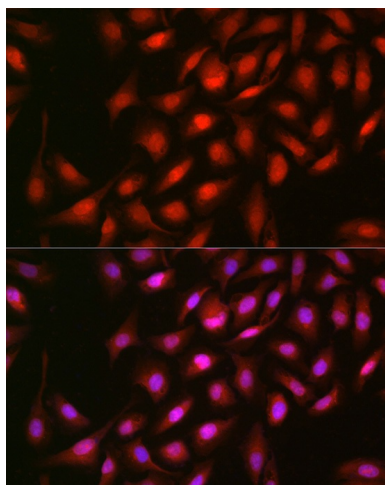
ERK; ERK-2; ERK2; ERT1; MAPK2; p38; p40; p41; p41 mapk; p42-MAPK; P42MAPK; PRKM1; PRKM2

Product images:

Western blot analysis of extracts from normal (control) and ERK2 knockout (KO) HeLa cells, using ERK2 antibody (TA378290) at 1:1000 dilution. | Secondary antibody: HRP Goat Anti-Rabbit IgG (H+L) at 1:10000 dilution. | Lysates/proteins: 25ug per lane. | Blocking buffer: 3% nonfat dry milk in TBST. | Detection: ECL Enhanced Kit. | Exposure time: 180s.



Western blot analysis of extracts of various cell lines, using ERK2 antibody (TA378290) at 1:1000 dilution. |Secondary antibody: HRP Goat Anti-Rabbit IgG (H+L) at 1:10000 dilution. |Lysates/proteins: 25ug per lane. |Blocking buffer: 3% nonfat dry milk in TBST. |Detection: ECL Enhanced Kit . |Exposure time: 180s.



Immunofluorescence analysis of U-2 OS cells using [KO Validated] ERK2 Rabbit pAb (TA378290) at dilution of 1:100 (40x lens). Blue: DAPI for nuclear staining.