

Product datasheet for **TA378289**

MAP7D1 Rabbit Polyclonal Antibody

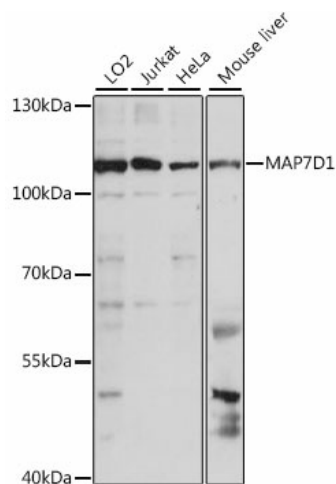
Product data:

Product Type:	Primary Antibodies
Applications:	WB
Recommended Dilution:	WB,1:500 - 1:2000
Reactivity:	Human, Mouse
Modifications:	Unmodified
Host:	Rabbit
Isotype:	IgG
Clonality:	Polyclonal
Immunogen:	Recombinant fusion protein containing a sequence corresponding to amino acids 200-460 of human MAP7D1 (NP_060537.3).
Formulation:	Buffer: PBS with 0.02% sodium azide,50% glycerol,pH7.3.
Concentration:	lot specific
Purification:	Affinity purification
Conjugation:	Unconjugated
Storage:	Store at -20°C. Avoid freeze / thaw cycles.
Stability:	Shelf life: one year from despatch.
Predicted Protein Size:	42kDa/88kDa/89kDa/92kDa
Gene Name:	MAP7 domain containing 1
Database Link:	Entrez Gene 55700 Human Q3KQU3
Synonyms:	FLJ10350; FLJ39022; KIAA1187; MGC117315; PARCC1; RPRC1



[View online »](#)

Product images:



Western blot analysis of extracts of various cell lines, using MAP7D1 antibody (TA378289) at 1:1000 dilution. | Secondary antibody: HRP Goat Anti-Rabbit IgG (H+L) at 1:10000 dilution. | Lysates/proteins: 25ug per lane. | Blocking buffer: 3% nonfat dry milk in TBST. | Detection: ECL Basic Kit . | Exposure time: 10s.