

Product datasheet for **TA378254**

MEK4 (MAP2K4) Rabbit Polyclonal Antibody

Product data:

Product Type:	Primary Antibodies
Applications:	IHC, WB
Recommended Dilution:	WB,1:500 - 1:2000 IHC,1:50 - 1:200
Reactivity:	Human, Mouse, Rat
Modifications:	Phospho S80
Host:	Rabbit
Isotype:	IgG
Clonality:	Polyclonal
Immunogen:	A synthetic phosphorylated peptide around S80 of human MAP2K4 (NP_003001.1).
Formulation:	Buffer: PBS with 0.02% sodium azide,50% glycerol,pH7.3.
Concentration:	lot specific
Purification:	Affinity purification
Conjugation:	Unconjugated
Storage:	Store at -20°C. Avoid freeze / thaw cycles.
Stability:	Shelf life: one year from despatch.
Predicted Protein Size:	44kDa/45kDa
Gene Name:	mitogen-activated protein kinase kinase 4
Database Link:	Entrez Gene 6416 Human P45985



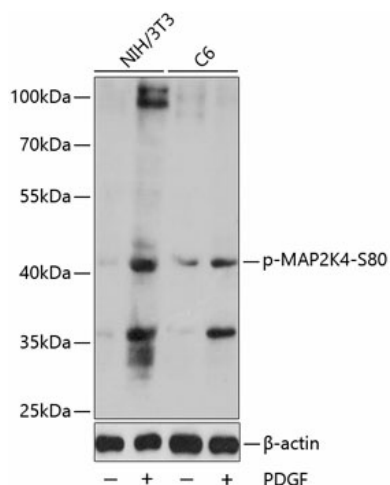
[View online »](#)

Background:

This gene encodes a member of the mitogen-activated protein kinase (MAPK) family. Members of this family act as an integration point for multiple biochemical signals and are involved in a wide variety of cellular processes such as proliferation, differentiation, transcription regulation, and development. They form a three-tiered signaling module composed of MAPKKKs, MAPKs, and MAPKs. This protein is phosphorylated at serine and threonine residues by MAPKKKs and subsequently phosphorylates downstream MAPK targets at threonine and tyrosine residues. A similar protein in mouse has been reported to play a role in liver organogenesis. A pseudogene of this gene is located on the long arm of chromosome X. Alternative splicing results in multiple transcript variants.

Synonyms:

JNKK; JNKK1; MAPKK4; MEK4; MKK4; PRKMK4; SEK1; SERK1

Product images:

Western blot analysis of extracts of NIH/3T3 and C6 cells, using Phospho-MAP2K4-S80 antibody (TA378254) at 1:1000 dilution. NIH/3T3 cells were treated by PDGF (100ng/mL) for 30 minutes after serum-starvation overnight or treated by PDGF (50 ng/mL) for 30 minutes after serum-starvation overnight. | Secondary antibody: HRP Goat Anti-Rabbit IgG (H+L) at 1:10000 dilution. | Lysates/proteins: 25ug per lane. | Blocking buffer: 3% BSA. | Detection: ECL Enhanced Kit. | Exposure time: 150s.