

## Product datasheet for **TA378246S**

### MEK1 (MAP2K1) Rabbit Polyclonal Antibody

#### Product data:

Product Type:	Primary Antibodies
Applications:	WB
Recommended Dilution:	WB,1:500 - 1:2000
Reactivity:	Human, Mouse, Rat
Modifications:	Phospho T286
Host:	Rabbit
Isotype:	IgG
Clonality:	Polyclonal
Immunogen:	A synthetic phosphorylated peptide around T286 of human MEK1 (NP_002746.1).
Formulation:	Buffer: PBS with 0.02% sodium azide,50% glycerol,pH7.3.
Concentration:	lot specific
Purification:	Affinity purification
Conjugation:	Unconjugated
Storage:	Store at -20°C. Avoid freeze / thaw cycles.
Stability:	Shelf life: one year from despatch.
Predicted Protein Size:	40kDa/43kDa
Gene Name:	mitogen-activated protein kinase kinase 1
Database Link:	<a href="#">Entrez Gene 5604 Human Q02750</a>

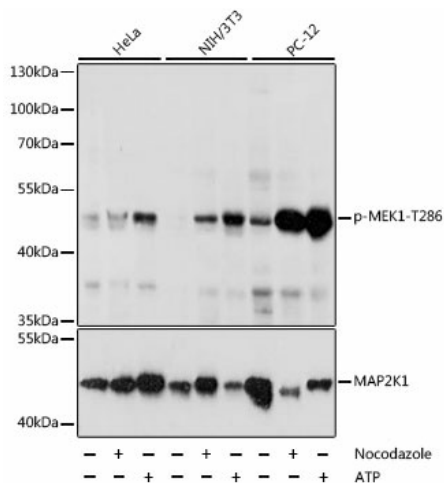
**Background:** The protein encoded by this gene is a member of the dual specificity protein kinase family, which acts as a mitogen-activated protein (MAP) kinase kinase. MAP kinases, also known as extracellular signal-regulated kinases (ERKs), act as an integration point for multiple biochemical signals. This protein kinase lies upstream of MAP kinases and stimulates the enzymatic activity of MAP kinases upon wide variety of extra- and intracellular signals. As an essential component of MAP kinase signal transduction pathway, this kinase is involved in many cellular processes such as proliferation, differentiation, transcription regulation and development.



[View online »](#)

Synonyms: MAPKK1; MEK1; MKK1; PRKMK1

**Product images:**



Western blot analysis of extracts of various cell lines, using Phospho-MEK1-T286 antibody ([TA378246]) at 1:2000 dilution or MEK1 antibody (A12687). HeLa cells were treated by nocodazole (50 ng/mL) at 37°C for 20 hours or treated by ATP(5 mM) at 30°C for 1 hour. NIH/3T3 cells were treated by Nocodazole (50 ng/mL) at 37°C for 20 hours or treated by ATP(5 mM) at 30°C for 1 hour. PC-12 cells were treated by Nocodazole (1 µg/mL) at 37°C for 16 hours or treated by ATP(5 mM) at 30°C for 1 hour. |Secondary antibody: HRP Goat Anti-Rabbit IgG (H+L) at 1:10000 dilution. |Lysates/proteins: 25ug per lane. |Blocking buffer: 3% BSA. |Detection: ECL Basic Kit . |Exposure time: 30s.