

## Product datasheet for **TA378244S**

### MEK1 (MAP2K1) Rabbit Polyclonal Antibody

#### Product data:

Product Type:	Primary Antibodies
Applications:	IP, WB
Recommended Dilution:	WB,1:500 - 1:2000 IP,1:50 - 1:100
Reactivity:	Human, Mouse, Rat
Modifications:	Phospho S298
Host:	Rabbit
Isotype:	IgG
Clonality:	Polyclonal
Immunogen:	A synthetic phosphorylated peptide around S298 of human MEK1 (NP_002746.1).
Formulation:	Buffer: PBS with 0.02% sodium azide,50% glycerol,pH7.3.
Concentration:	lot specific
Purification:	Affinity purification
Conjugation:	Unconjugated
Storage:	Store at -20°C. Avoid freeze / thaw cycles.
Stability:	Shelf life: one year from despatch.
Predicted Protein Size:	40kDa/43kDa
Gene Name:	mitogen-activated protein kinase kinase 1
Database Link:	<a href="#">Entrez Gene 5604 Human Q02750</a>

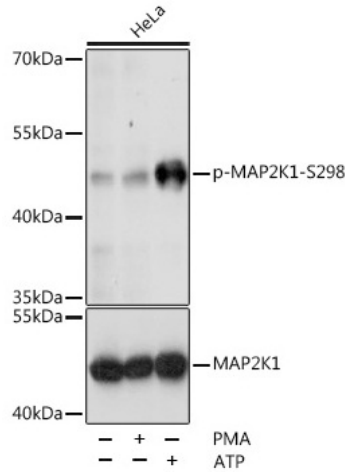
**Background:** The protein encoded by this gene is a member of the dual specificity protein kinase family, which acts as a mitogen-activated protein (MAP) kinase kinase. MAP kinases, also known as extracellular signal-regulated kinases (ERKs), act as an integration point for multiple biochemical signals. This protein kinase lies upstream of MAP kinases and stimulates the enzymatic activity of MAP kinases upon wide variety of extra- and intracellular signals. As an essential component of MAP kinase signal transduction pathway, this kinase is involved in many cellular processes such as proliferation, differentiation, transcription regulation and development.



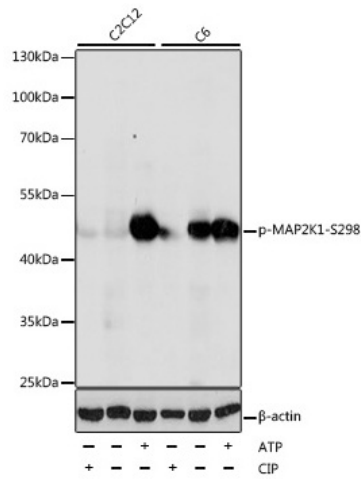
[View online »](#)

Synonyms: MAPKK1; MEK1; MKK1; PRKMK1

**Product images:**



Western blot analysis of extracts of various cell lines, using Phospho-MAP2K1-S298 antibody ([TA378244]) at 1:1000 dilution or MAP2K1 antibody (A12687). HeLa cells were treated by PMA/TPA (200 nM) at 37°C for 15 minutes after serum-starvation overnight or treated by ATP(5 mM) at 30°C for 1 hour. Secondary antibody: HRP Goat Anti-Rabbit IgG (H+L) at 1:10000 dilution. Lysates/proteins: 25ug per lane. Blocking buffer: 3% BSA. Detection: ECL Basic Kit. Exposure time: 1s.



Western blot analysis of extracts of various cell lines, using Phospho-MAP2K1-S298 antibody ([TA378244]) at 1:1000 dilution. C2C12 cells were treated by CIP(20uL/400ul) at 37°C for 1 hour or treated by ATP(5 mM) at 30°C for 1 hour. C6 cells were treated by CIP(20uL/400ul) at 37°C for 1 hour or treated by ATP(5 mM) at 30°C for 1 hour. Secondary antibody: HRP Goat Anti-Rabbit IgG (H+L) at 1:10000 dilution. Lysates/proteins: 25ug per lane. Blocking buffer: 3% BSA. Detection: ECL Basic Kit. Exposure time: 1s.