

Product datasheet for **TA378231**

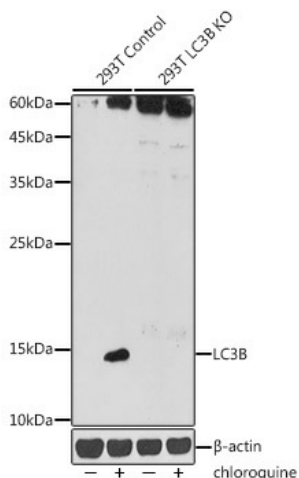
LC3B (MAP1LC3B) Rabbit Polyclonal Antibody

Product data:

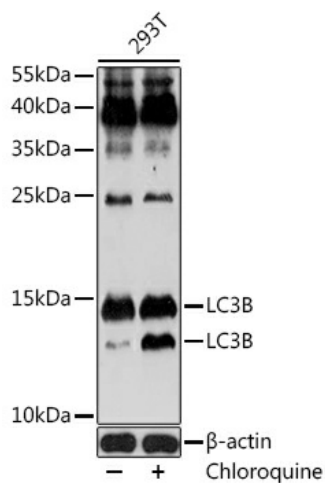
| | |
|-------------------------|--|
| Product Type: | Primary Antibodies |
| Applications: | ICC/IF, IHC, WB |
| Recommended Dilution: | WB,1:500 - 1:2000 IHC,1:50 - 1:200 IF,1:50 - 1:200 |
| Reactivity: | Human, Mouse, Rat |
| Modifications: | Unmodified |
| Host: | Rabbit |
| Isotype: | IgG |
| Clonality: | Polyclonal |
| Immunogen: | A synthetic peptide corresponding to a sequence within amino acids 1-100 of human LC3B (NP_073729.1). |
| Formulation: | Buffer: PBS with 0.02% sodium azide,50% glycerol,pH7.3. |
| Concentration: | lot specific |
| Purification: | Affinity purification |
| Conjugation: | Unconjugated |
| Storage: | Store at -20°C. Avoid freeze / thaw cycles. |
| Stability: | Shelf life: one year from despatch. |
| Predicted Protein Size: | 14kDa |
| Gene Name: | microtubule associated protein 1 light chain 3 beta |
| Database Link: | Entrez Gene 81631 Human Q9GZQ8 |
| Background: | The product of this gene is a subunit of neuronal microtubule-associated MAP1A and MAP1B proteins, which are involved in microtubule assembly and important for neurogenesis. Studies on the rat homolog implicate a role for this gene in autophagy, a process that involves the bulk degradation of cytoplasmic component. |
| Synonyms: | LC3B; MAP1A/1BLC3; MAP1ALC3 |



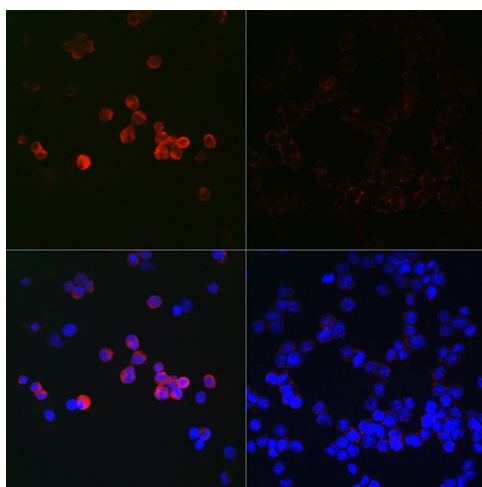
[View online »](#)

Product images:


Western blot analysis of extracts from normal (control) and LC3B knockout (KO) 293T cells, using LC3B antibody (TA378231) at 1:1000 dilution. 293T cells were treated by Chloroquine (50 μ M) at 37°C for 20 hours. | Secondary antibody: HRP Goat Anti-Rabbit IgG (H+L) at 1:10000 dilution. | Lysates/proteins: 25ug per lane. | Blocking buffer: 3% nonfat dry milk in TBST. | Detection: ECL Enhanced Kit. | Exposure time: 180s.



Western blot analysis of extracts of 293T cells, using LC3B antibody (TA378231) at 1:1000 dilution. 293T cells were treated by Chloroquine (50 μ M) at 37°C for 20 hours. | Secondary antibody: HRP Goat Anti-Rabbit IgG (H+L) at 1:10000 dilution. | Lysates/proteins: 25ug per lane. | Blocking buffer: 3% BSA. | Detection: ECL Enhanced Kit. | Exposure time: 180s.



Immunofluorescence analysis of 293T cells using LC3B Rabbit pAb (TA378231) at dilution of 1:100 (40x lens). 293T cells were treated by Chloroquine (50 μ M) at 37°C for 20 hours. Blue: DAPI for nuclear staining.