

Product datasheet for **TA378226**

MANEA Rabbit Polyclonal Antibody

Product data:

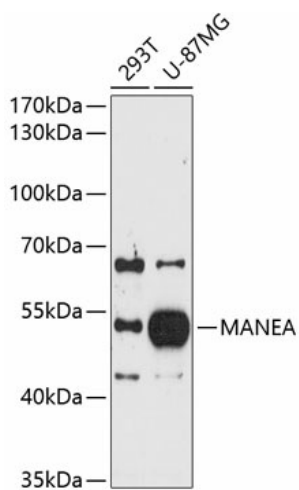
Product Type:	Primary Antibodies
Applications:	WB
Recommended Dilution:	WB,1:500 - 1:2000
Reactivity:	Human
Modifications:	Unmodified
Host:	Rabbit
Isotype:	IgG
Clonality:	Polyclonal
Immunogen:	Recombinant fusion protein containing a sequence corresponding to amino acids 30-100 of human MANEA (NP_078917.2).
Formulation:	Buffer: PBS with 0.02% sodium azide,50% glycerol,pH7.3.
Concentration:	lot specific
Purification:	Affinity purification
Conjugation:	Unconjugated
Storage:	Store at -20°C. Avoid freeze / thaw cycles.
Stability:	Shelf life: one year from despatch.
Predicted Protein Size:	53kDa
Gene Name:	mannosidase endo-alpha
Database Link:	Entrez Gene 79694 Human Q5SRI9
Background:	N-glycosylation of proteins is initiated in the endoplasmic reticulum (ER) by the transfer of the preassembled oligosaccharide glucose-3-mannose-9-N-acetylglucosamine-2 from dolichyl pyrophosphate to acceptor sites on the target protein by an oligosaccharyltransferase complex. This core oligosaccharide is sequentially processed by several ER glycosidases and by an endomannosidase (E.C. 3.2.1.130), such as MANEA, in the Golgi. MANEA catalyzes the release of mono-, di-, and triglucosylmannose oligosaccharides by cleaving the alpha-1,2-mannosidic bond that links them to high-mannose glycans (Hamilton et al., 2005 [PubMed 15677381]).[supplied by OMIM, Sep 2008]



[View online »](#)

Synonyms: DKFZp686D20120; ENDO; Endomannosidase; FLJ12838; hEndo; mandaselin

Product images:



Western blot analysis of extracts of various cell lines, using MANEA antibody (TA378226) at 1:1000 dilution. | Secondary antibody: HRP Goat Anti-Rabbit IgG (H+L) at 1:10000 dilution. | Lysates/proteins: 25ug per lane. | Blocking buffer: 3% nonfat dry milk in TBST. | Detection: ECL Basic Kit . | Exposure time: 90s.