

## Product datasheet for **TA378224S**

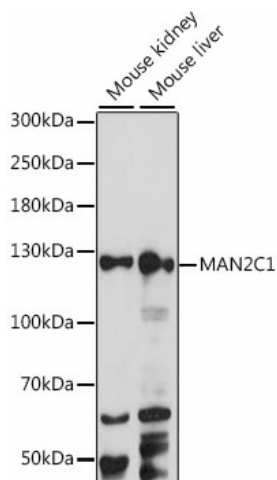
### MAN2C1 Rabbit Polyclonal Antibody

#### Product data:

Product Type:	Primary Antibodies
Applications:	ELISA, WB
Recommended Dilution:	WB, 1:500 - 1:2000 ELISA, Recommended starting concentration is 1 µg/mL. Please optimize the concentration based on your specific assay requirements.
Reactivity:	Mouse
Modifications:	Unmodified
Host:	Rabbit
Isotype:	IgG
Clonality:	Polyclonal
Formulation:	Buffer: PBS with 0.02% sodium azide, 50% glycerol, pH 7.3.
Concentration:	lot specific
Purification:	Affinity purification
Conjugation:	Unconjugated
Storage:	Store at -20°C. Avoid freeze / thaw cycles.
Stability:	Shelf life: one year from despatch.
Predicted Protein Size:	116kDa
Gene Name:	mannosidase alpha class 2C member 1
Database Link:	<a href="#">Q9NTJ4</a>
Background:	Predicted to enable alpha-mannosidase activity. Predicted to be involved in oligosaccharide catabolic process. Located in nucleoplasm.
Synonyms:	DKFZp686E23167; MAN6A8; MANA; MANA1; MGC87979



[View online »](#)

**Product images:**


Western blot analysis of various lysates using MAN2C1 Rabbit pAb ([TA378224]) at 1:1000 dilution.

Secondary antibody: HRP-conjugated Goat anti-Rabbit IgG (H+L) (AS014) at 1:10000 dilution.

Lysates/proteins: 25µg per lane.

Blocking buffer: 3% nonfat dry milk in TBST.

Detection: ECL Basic Kit (RM00020).

Exposure time: 30s.