

Product datasheet for **TA378224**

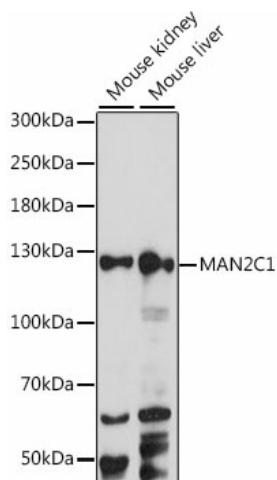
MAN2C1 Rabbit Polyclonal Antibody

Product data:

| | |
|-------------------------|--|
| Product Type: | Primary Antibodies |
| Applications: | WB |
| Recommended Dilution: | WB,1:500 - 1:2000 |
| Reactivity: | Mouse |
| Modifications: | Unmodified |
| Host: | Rabbit |
| Isotype: | IgG |
| Clonality: | Polyclonal |
| Immunogen: | Recombinant fusion protein containing a sequence corresponding to amino acids 1-300 of human MAN2C1 (NP_006706.2). |
| Formulation: | Buffer: PBS with 0.02% sodium azide,50% glycerol,pH7.3. |
| Concentration: | lot specific |
| Purification: | Affinity purification |
| Conjugation: | Unconjugated |
| Storage: | Store at -20°C. Avoid freeze / thaw cycles. |
| Stability: | Shelf life: one year from despatch. |
| Predicted Protein Size: | 104kDa/113kDa/115kDa/117kDa |
| Gene Name: | mannosidase alpha class 2C member 1 |
| Database Link: | Q9NTJ4 |
| Background: | Cleaves alpha 1,2-, alpha 1,3-, and alpha 1,6-linked mannose residues from glycoproteins. Involved in the degradation of free oligosaccharides in the cytoplasm. |
| Synonyms: | DKFZp686E23167; MAN6A8; MANA; MANA1; MGC87979 |



[View online »](#)

Product images:

Western blot analysis of extracts of various cell lines, using MAN2C1 antibody (TA378224) at 1:1000 dilution. | Secondary antibody: HRP Goat Anti-Rabbit IgG (H+L) at 1:10000 dilution. | Lysates/proteins: 25ug per lane. | Blocking buffer: 3% nonfat dry milk in TBST. | Detection: ECL Basic Kit . | Exposure time: 30s.