

Product datasheet for **TA378220S**

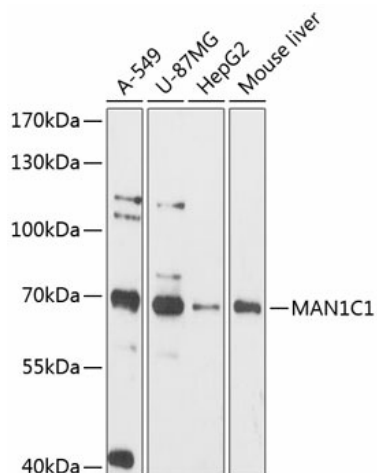
MAN1C1 Rabbit Polyclonal Antibody

Product data:

Product Type:	Primary Antibodies
Applications:	ELISA, WB
Recommended Dilution:	WB, 1:500 - 1:2000 ELISA, Recommended starting concentration is 1 µg/mL. Please optimize the concentration based on your specific assay requirements.
Reactivity:	Human, Mouse
Modifications:	Unmodified
Host:	Rabbit
Isotype:	IgG
Clonality:	Polyclonal
Formulation:	Buffer: PBS with 0.02% sodium azide, 50% glycerol, pH 7.3.
Concentration:	lot specific
Purification:	Affinity purification
Conjugation:	Unconjugated
Storage:	Store at -20°C. Avoid freeze / thaw cycles.
Stability:	Shelf life: one year from despatch.
Predicted Protein Size:	71kDa
Gene Name:	mannosidase alpha class 1C member 1
Database Link:	Entrez Gene 57134 Human Q9NR34
Background:	Predicted to enable mannosyl-oligosaccharide 1,2-alpha-mannosidase activity. Predicted to be involved in N-glycan processing. Located in extracellular exosome.
Synonyms:	HMIC; MAN1A3; MAN1C; pp6318



[View online »](#)

Product images:


Western blot analysis of various lysates using MAN1C1 Rabbit pAb (TA378220) at 1:3000 dilution.

Secondary antibody: HRP-conjugated Goat anti-Rabbit IgG (H+L) at 1:10000 dilution.

Lysates/proteins: 25µg per lane.

Blocking buffer: 3% nonfat dry milk in TBST.

Detection: ECL Basic Kit .

Exposure time: 90s.