

Product datasheet for **TA378211S**

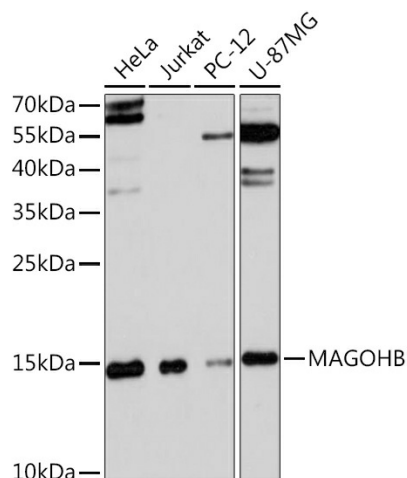
Mago nashi homolog 2 (MAGOH2) Rabbit Polyclonal Antibody

Product data:

Product Type:	Primary Antibodies
Applications:	ELISA, WB
Recommended Dilution:	WB, 1:500 - 1:2000 ELISA, Recommended starting concentration is 1 µg/mL. Please optimize the concentration based on your specific assay requirements.
Reactivity:	Human, Rat
Modifications:	Unmodified
Host:	Rabbit
Isotype:	IgG
Clonality:	Polyclonal
Formulation:	Buffer: PBS with 0.02% sodium azide, 50% glycerol, pH 7.3.
Concentration:	lot specific
Purification:	Affinity purification
Conjugation:	Unconjugated
Storage:	Store at -20°C. Avoid freeze / thaw cycles.
Stability:	Shelf life: one year from despatch.
Predicted Protein Size:	17kDa
Gene Name:	mago homolog B, exon junction complex core component
Database Link:	Entrez Gene 55110 Human Q96A72
Background:	Enables RNA binding activity. Involved in mRNA splicing, via spliceosome and nuclear-transcribed mRNA catabolic process, nonsense-mediated decay. Located in nucleus. Part of U2-type catalytic step 1 spliceosome; U2-type precatalytic spliceosome; and exon-exon junction complex.
Synonyms:	FLJ10292; mago; magoh; MAGOH2; MGN2



[View online »](#)

Product images:


Western blot analysis of various lysates using MAGOHB Rabbit pAb (TA378211S) at 1:3000 dilution.

Secondary antibody: HRP-conjugated Goat anti-Rabbit IgG (H+L) (AS014) at 1:10000 dilution.

Lysates/proteins: 25µg per lane.

Blocking buffer: 3% nonfat dry milk in TBST.

Detection: ECL Basic Kit (RM00020).

Exposure time: 90s.