

Product datasheet for **TA378211**

Mago nashi homolog 2 (MAGOHB) Rabbit Polyclonal Antibody

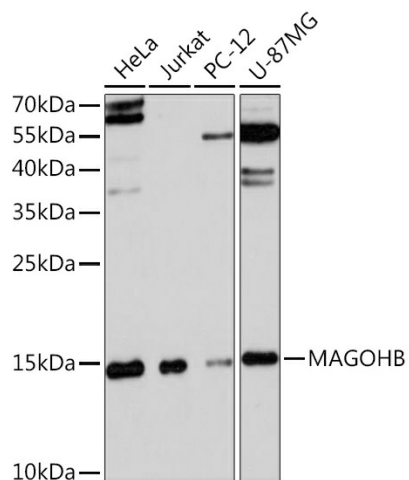
Product data:

Product Type:	Primary Antibodies
Applications:	WB
Recommended Dilution:	WB,1:500 - 1:2000
Reactivity:	Human, Rat
Modifications:	Unmodified
Host:	Rabbit
Isotype:	IgG
Clonality:	Polyclonal
Immunogen:	Recombinant fusion protein containing a sequence corresponding to amino acids 1-148 of human MAGOHB (NP_060518.1).
Formulation:	Buffer: PBS with 0.02% sodium azide,50% glycerol,pH7.3.
Concentration:	lot specific
Purification:	Affinity purification
Conjugation:	Unconjugated
Storage:	Store at -20°C. Avoid freeze / thaw cycles.
Stability:	Shelf life: one year from despatch.
Predicted Protein Size:	17kDa
Gene Name:	mago homolog B, exon junction complex core component
Database Link:	Entrez Gene 55110 Human Q96A72
Background:	Required for pre-mRNA splicing as component of the spliceosome. Plays a redundant role with MAGOH in the exon junction complex and in the nonsense-mediated decay (NMD) pathway.
Synonyms:	FLJ10292; mago; magoh; MAGOH2; MGN2



[View online »](#)

Product images:



Western blot analysis of extracts of various cell lines, using MAGOHB Rabbit pAb (TA378211) at 1:3000 dilution. | Secondary antibody: HRP Goat Anti-Rabbit IgG (H+L) at 1:10000 dilution. | Lysates/proteins: 25ug per lane. | Blocking buffer: 3% nonfat dry milk in TBST. | Detection: ECL Basic Kit . | Exposure time: 90s.