

## Product datasheet for **TA378192S**

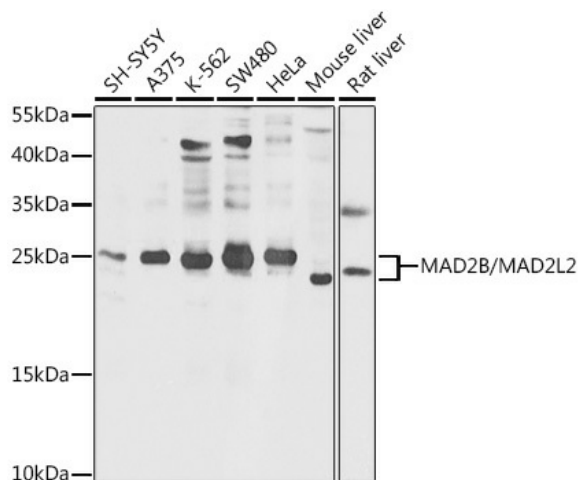
### MAD2L2 Rabbit Polyclonal Antibody

#### Product data:

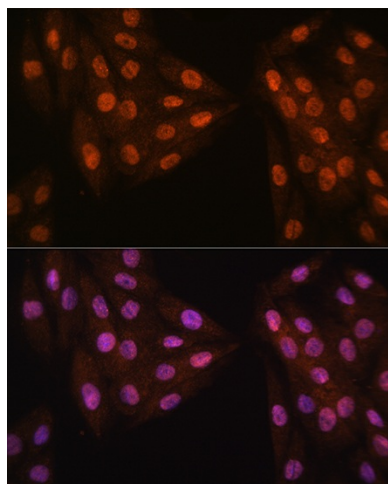
Product Type:	Primary Antibodies
Applications:	ICC/IF, WB
Recommended Dilution:	WB, 1:500 - 1:2000 IF, 1:50 - 1:200
Reactivity:	Human, Mouse, Rat
Modifications:	Unmodified
Host:	Rabbit
Isotype:	IgG
Clonality:	Polyclonal
Immunogen:	Recombinant fusion protein containing a sequence corresponding to amino acids 1-211 of human MAD2B/MAD2B/MAD2L2 (NP_006332.3).
Formulation:	Buffer: PBS with 0.02% sodium azide, 50% glycerol, pH 7.3.
Concentration:	lot specific
Purification:	Affinity purification
Conjugation:	Unconjugated
Storage:	Store at -20°C. Avoid freeze / thaw cycles.
Stability:	Shelf life: one year from despatch.
Predicted Protein Size:	24kDa
Gene Name:	MAD2 mitotic arrest deficient-like 2 (yeast)
Database Link:	<a href="#">Entrez Gene 10459 Human Q9UI95</a>
Background:	The protein encoded by this gene is a component of the mitotic spindle assembly checkpoint that prevents the onset of anaphase until all chromosomes are properly aligned at the metaphase plate. The encoded protein, which is similar to MAD2L1, is capable of interacting with ADAM9, ADAM15, REV1, and REV3 proteins.
Synonyms:	hREV7; MAD2B; OTTHUMP00000002273; REV7



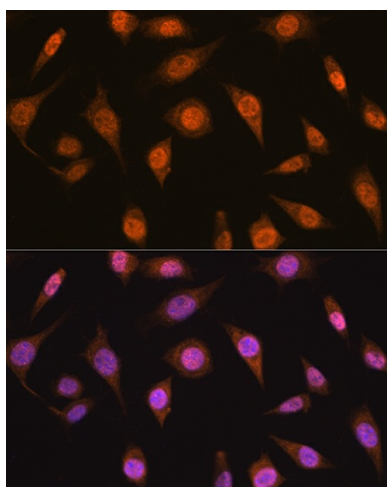
[View online »](#)

**Product images:**


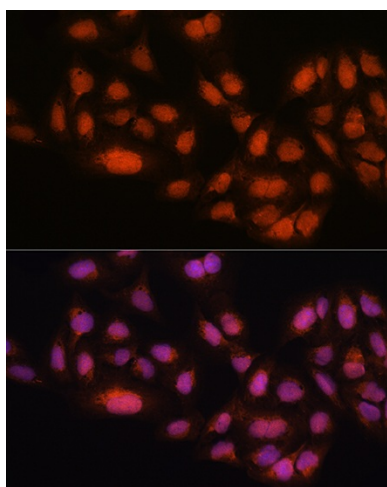
Western blot analysis of extracts of various cell lines, using MAD2B/MAD2B/MAD2L2 antibody ([TA378192]) at 1:1000 dilution. |Secondary antibody: HRP Goat Anti-Rabbit IgG (H+L) at 1:10000 dilution. |Lysates/proteins: 25ug per lane. |Blocking buffer: 3% nonfat dry milk in TBST. |Detection: ECL Basic Kit . |Exposure time: 5s.



Immunofluorescence analysis of H9C2 cells using MAD2B/MAD2B/MAD2L2 antibody ([TA378192]) at dilution of 1:100. Blue: DAPI for nuclear staining.



Immunofluorescence analysis of L929 cells using MAD2B/MAD2B/MAD2L2 antibody ([TA378192]) at dilution of 1:100. Blue: DAPI for nuclear staining.



Immunofluorescence analysis of U2OS cells using MAD2B/MAD2B/MAD2L2 antibody ([TA378192]) at dilution of 1:100. Blue: DAPI for nuclear staining.