

## Product datasheet for **TA378188**

### LZTS1 Rabbit Polyclonal Antibody

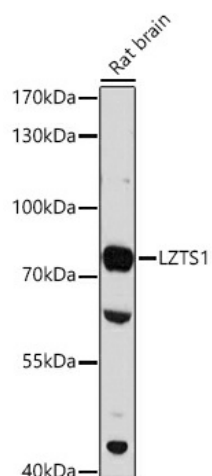
#### Product data:

Product Type:	Primary Antibodies
Applications:	WB
Recommended Dilution:	WB,1:500 - 1:2000
Reactivity:	Human, Mouse, Rat
Modifications:	Unmodified
Host:	Rabbit
Isotype:	IgG
Clonality:	Polyclonal
Immunogen:	Recombinant fusion protein containing a sequence corresponding to amino acids 337-596 of human LZTS1 (NP_066300.1).
Formulation:	Buffer: PBS with 0.02% sodium azide,50% glycerol,pH7.3.
Concentration:	lot specific
Purification:	Affinity purification
Conjugation:	Unconjugated
Storage:	Store at -20°C. Avoid freeze / thaw cycles.
Stability:	Shelf life: one year from despatch.
Predicted Protein Size:	8kDa/22kDa/55kDa/59kDa/62kDa/63kDa/66kDa
Gene Name:	leucine zipper, putative tumor suppressor 1
Database Link:	<a href="#">Entrez Gene 11178 Human Q9Y250</a>
Background:	This gene encodes a tumor suppressor protein that is ubiquitously expressed in normal tissues. In uveal melanomas, expression of this protein is silenced in rapidly metastasizing and metastatic tumor cells but has normal expression in slowly metastasizing or nonmetastasizing tumor cells. This protein may have a role in cell-cycle control by interacting with the Cdk1/cyclinB1 complex. This gene is located on chromosomal region 8p22. Loss of heterozygosity (LOH) in the 8p arm is a common characteristic of many types of cancer.
Synonyms:	F37; FEZ1; OTTHUMP00000122524

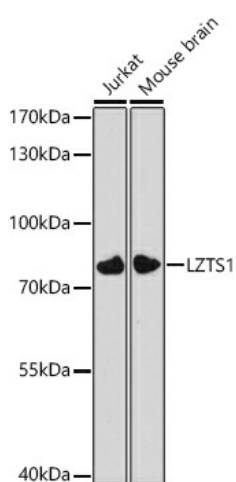


[View online »](#)

## Product images:



Western blot analysis of extracts of Rat brain, using LZTS1 antibody (TA378188) at 1:3000 dilution. | Secondary antibody: HRP Goat Anti-Rabbit IgG (H+L) at 1:10000 dilution. | Lysates/proteins: 25ug per lane. | Blocking buffer: 3% nonfat dry milk in TBST. | Detection: ECL Enhanced Kit. | Exposure time: 90s.



Western blot analysis of extracts of various cell lines, using LZTS1 antibody (TA378188) at 1:3000 dilution. | Secondary antibody: HRP Goat Anti-Rabbit IgG (H+L) at 1:10000 dilution. | Lysates/proteins: 25ug per lane. | Blocking buffer: 3% nonfat dry milk in TBST. | Detection: ECL Basic Kit. | Exposure time: 90s.