

## Product datasheet for **TA378173**

### LYAR Rabbit Polyclonal Antibody

#### Product data:

Product Type:	Primary Antibodies
Applications:	ICC/IF, IHC, WB
Recommended Dilution:	WB,1:500 - 1:2000 IHC,1:50 - 1:200 IF,1:50 - 1:200
Reactivity:	Human, Mouse, Rat
Modifications:	Unmodified
Host:	Rabbit
Isotype:	IgG
Clonality:	Polyclonal
Immunogen:	Recombinant fusion protein containing a sequence corresponding to amino acids 10-160 of human LYAR (NP_060286.1).
Formulation:	Buffer: PBS with 0.02% sodium azide,50% glycerol,pH7.3.
Concentration:	lot specific
Purification:	Affinity purification
Conjugation:	Unconjugated
Storage:	Store at -20°C. Avoid freeze / thaw cycles.
Stability:	Shelf life: one year from despatch.
Predicted Protein Size:	43kDa
Gene Name:	Ly1 antibody reactive
Database Link:	<a href="#">Entrez Gene 55646 Human Q9NX58</a>



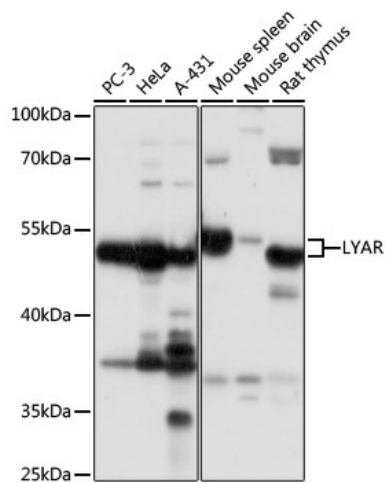
[View online »](#)

**Background:**

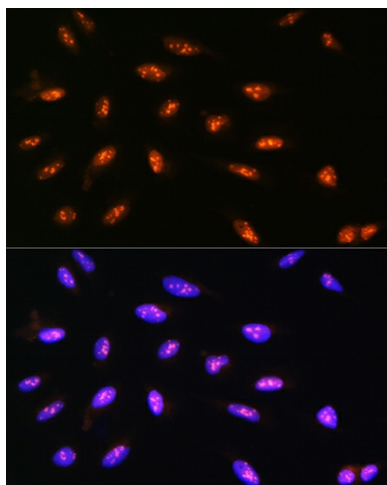
Plays a role in the maintenance of the appropriate processing of 47S/45S pre-rRNA to 32S/30S pre-rRNAs and their subsequent processing to produce 18S and 28S rRNAs. Also acts at the level of transcription regulation. Along with PRMT5, binds the gamma-globin (HBG1/HBG2 promoter and represses its expression. In neuroblastoma cells, may also repress the expression of oxidative stress genes, including CHAC1, HMOX1, SLC7A11, ULBP1 and SNORD41 that encodes a small nucleolar RNA. Preferentially binds to a DNA motif containing 5'-GGTTAT-3'. Negatively regulates the antiviral innate immune response by targeting IRF3 and impairing its DNA-binding activity. In addition, inhibits NF-kappa-B-mediated expression of proinflammatory cytokines. Stimulates phagocytosis of photoreceptor outer segments by retinal pigment epithelial cells (By similarity. Prevents nucleolin/NCL self-cleavage, maintaining a normal steady-state level of NCL protein in undifferentiated embryonic stem cells (ESCs, which in turn is essential for ESC self-renewal (By similarity).

**Synonyms:**

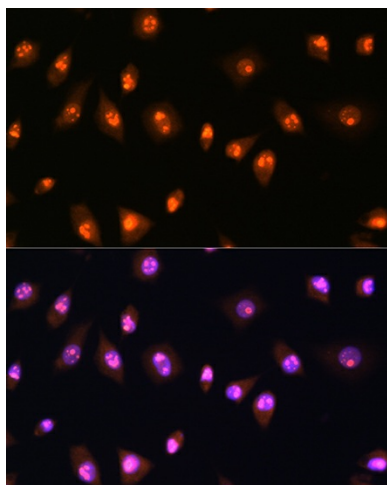
FLJ20425; ZLYAR

**Product images:**


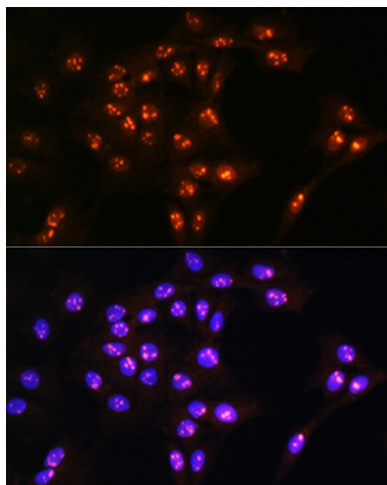
Western blot analysis of extracts of various cell lines, using LYAR antibody (TA378173) at 1:1000 dilution. | Secondary antibody: HRP Goat Anti-Rabbit IgG (H+L) at 1:10000 dilution. | Lysates/proteins: 25ug per lane. | Blocking buffer: 3% nonfat dry milk in TBST. | Detection: ECL Basic Kit . | Exposure time: 5s.



Immunofluorescence analysis of U2OS cells using LYAR Rabbit pAb (TA378173) at dilution of 1:100. Blue: DAPI for nuclear staining.



Immunofluorescence analysis of L929 cells using LYAR Rabbit pAb (TA378173) at dilution of 1:100. Blue: DAPI for nuclear staining.



Immunofluorescence analysis of C6 cells using LYAR Rabbit pAb (TA378173) at dilution of 1:100. Blue: DAPI for nuclear staining.