

## Product datasheet for **TA378157S**

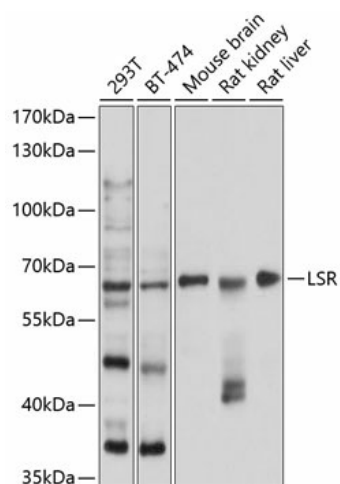
### Lipolysis Stimulated Lipoprotein Receptor (LSR) Rabbit Polyclonal Antibody

#### Product data:

Product Type:	Primary Antibodies
Applications:	ELISA, WB
Recommended Dilution:	WB, 1:500 - 1:2000 ELISA, Recommended starting concentration is 1 µg/mL. Please optimize the concentration based on your specific assay requirements.
Reactivity:	Human, Mouse, Rat
Modifications:	Unmodified
Host:	Rabbit
Isotype:	IgG
Clonality:	Polyclonal
Formulation:	Buffer: PBS with 0.02% sodium azide, 50% glycerol, pH 7.3.
Concentration:	lot specific
Purification:	Affinity purification
Conjugation:	Unconjugated
Storage:	Store at -20°C. Avoid freeze / thaw cycles.
Stability:	Shelf life: one year from despatch.
Predicted Protein Size:	71kDa
Gene Name:	lipolysis stimulated lipoprotein receptor
Database Link:	<a href="#">Entrez Gene 51599 Human Q86X29</a>
Background:	Predicted to be involved in several processes, including establishment of skin barrier; protein localization to tricellular tight junction; and tricellular tight junction assembly. Located in extracellular exosome.
Synonyms:	ILDR3; LISCH; LISCH7; MGC10659; MGC48312; MGC48503



[View online »](#)

**Product images:**


Western blot analysis of various lysates using LSR Rabbit pAb (TA378157) at 1:1000 dilution.  
 Secondary antibody: HRP-conjugated Goat anti-Rabbit IgG (H+L) (AS014) at 1:10000 dilution.  
 Lysates/proteins: 25µg per lane.  
 Blocking buffer: 3% nonfat dry milk in TBST.  
 Detection: ECL Basic Kit (RM00020).  
 Exposure time: 10s.