

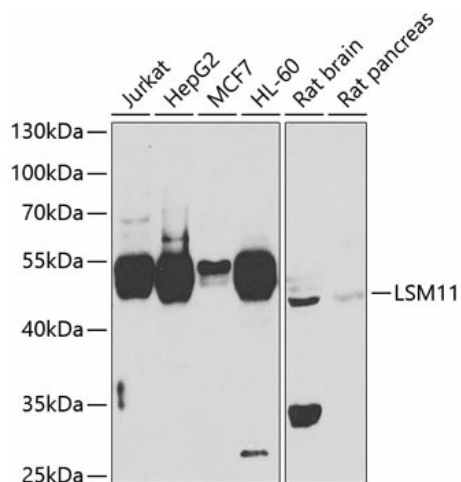
Product datasheet for **TA378149S**

LSM11 Rabbit Polyclonal Antibody

Product data:

Product Type:	Primary Antibodies
Applications:	ELISA, WB
Recommended Dilution:	WB, 1:500 - 1:2000 ELISA, Recommended starting concentration is 1 µg/mL. Please optimize the concentration based on your specific assay requirements.
Reactivity:	Human, Rat
Modifications:	Unmodified
Host:	Rabbit
Isotype:	IgG
Clonality:	Polyclonal
Formulation:	Buffer: PBS with 0.02% sodium azide, 50% glycerol, pH 7.3.
Concentration:	lot specific
Purification:	Affinity purification
Conjugation:	Unconjugated
Storage:	Store at -20°C. Avoid freeze / thaw cycles.
Stability:	Shelf life: one year from despatch.
Predicted Protein Size:	40kDa
Gene Name:	LSM11, U7 small nuclear RNA associated
Database Link:	Entrez Gene 134353 Human P83369
Background:	Enables U7 snRNA binding activity. Involved in positive regulation of G1/S transition of mitotic cell cycle. Located in nuclear body. Part of U7 snRNP and telomerase holoenzyme complex. Implicated in Aicardi-Goutieres syndrome.
Synonyms:	2210404M20Rik; FLJ38273

[View online »](#)

Product images:


Western blot analysis of various lysates using LSM11 Rabbit pAb (TA378149) at 1:1000 dilution.

Secondary antibody: HRP-conjugated Goat anti-Rabbit IgG (H+L) (AS014) at 1:10000 dilution.

Lysates/proteins: 25µg per lane.

Blocking buffer: 3% nonfat dry milk in TBST.

Detection: ECL Basic Kit (RM00020).

Exposure time: 10s.