

Product datasheet for **TA378143S**

LRRK2 Rabbit Polyclonal Antibody

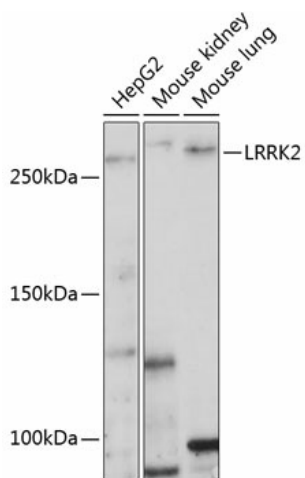
Product data:

Product Type:	Primary Antibodies
Applications:	ICC/IF, IHC, WB
Recommended Dilution:	WB,1:500 - 1:2000 IHC,1:50 - 1:200 IF,1:50 - 1:200
Reactivity:	Human, Mouse, Rat
Host:	Rabbit
Isotype:	IgG
Clonality:	Polyclonal
Immunogen:	Recombinant fusion protein containing a sequence corresponding to amino acids 2355-2527 of human LRRK2 (NP_940980.3).
Formulation:	Buffer: PBS with 0.02% sodium azide,50% glycerol,pH7.3.
Concentration:	lot specific
Purification:	Affinity purification
Conjugation:	Unconjugated
Storage:	Store at -20°C. Avoid freeze / thaw cycles.
Stability:	Shelf life: one year from despatch.
Predicted Protein Size:	286kDa
Gene Name:	leucine-rich repeat kinase 2
Database Link:	Entrez Gene 120892 Human Q5S007
Background:	This gene is a member of the leucine-rich repeat kinase family and encodes a protein with an ankyrin repeat region, a leucine-rich repeat (LRR) domain, a kinase domain, a DFG-like motif, a RAS domain, a GTPase domain, a MLK-like domain, and a WD40 domain. The protein is present largely in the cytoplasm but also associates with the mitochondrial outer membrane. Mutations in this gene have been associated with Parkinson disease-8.
Synonyms:	AURA17; DARDARIN; DKFZp434H2111; FLJ45829; PARK8; RIPK7; ROCO2

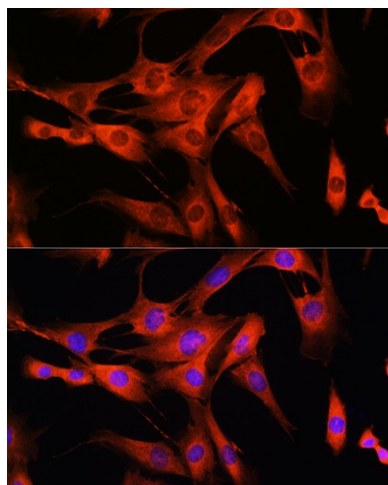


[View online »](#)

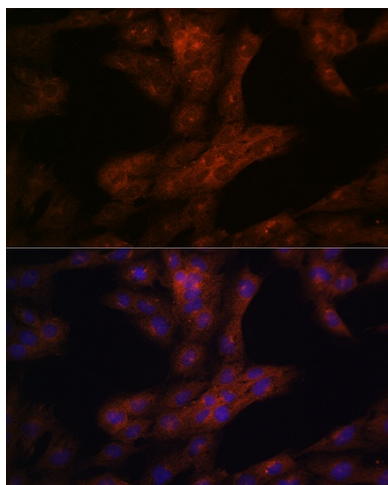
Product images:



Western blot analysis of extracts of various cell lines, using LRRK2 Polyclonal Antibody ([TA378143]) at 1:1000 dilution. | Secondary antibody: HRP Goat Anti-Rabbit IgG (H+L) at 1:10000 dilution. | Lysates/proteins: 25ug per lane. | Blocking buffer: 3% nonfat dry milk in TBST. | Detection: ECL Basic Kit. | Exposure time: 3min.



Immunofluorescence analysis of C2C12 cells using LRRK2 Rabbit pAb ([TA378143]) at dilution of 1:100 (40x lens). Blue: DAPI for nuclear staining.



Immunofluorescence analysis of C6 cells using LRRK2 Rabbit pAb ([TA378143]) at dilution of 1:100 (40x lens). Blue: DAPI for nuclear staining.