

Product datasheet for **TA378142**

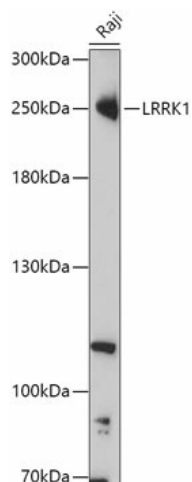
LRRK1 Rabbit Polyclonal Antibody

Product data:

Product Type:	Primary Antibodies
Applications:	WB
Recommended Dilution:	WB,1:500 - 1:2000
Reactivity:	Human
Modifications:	Unmodified
Host:	Rabbit
Isotype:	IgG
Clonality:	Polyclonal
Immunogen:	Recombinant fusion protein containing a sequence corresponding to amino acids 10-90 of human LRRK1 (NP_078928.3).
Formulation:	Buffer: PBS with 0.02% sodium azide,50% glycerol,pH7.3.
Concentration:	lot specific
Purification:	Affinity purification
Conjugation:	Unconjugated
Storage:	Store at -20°C. Avoid freeze / thaw cycles.
Stability:	Shelf life: one year from despatch.
Gene Name:	leucine-rich repeat kinase 1
Database Link:	Entrez Gene 79705 Human Q38SD2
Background:	This gene encodes a multi-domain protein that is a leucine-rich repeat kinase and a GDP/GTP binding protein. The encoded protein is thought to play a role in the regulation of bone mass. Mice lacking a similar gene showed severe osteopetrosis, increased bone mineralization and decreased bone resorption. [provided by RefSeq, Jan 2017]
Synonyms:	FLJ23119; FLJ27465; KIAA1790; RIPK6; Roco1



[View online »](#)

Product images:

Western blot analysis of extracts of Raji cells, using LRRK1 antibody (TA378142) at 1:1000 dilution. | Secondary antibody: HRP Goat Anti-Rabbit IgG (H+L) at 1:10000 dilution. | Lysates/proteins: 25ug per lane. | Blocking buffer: 3% nonfat dry milk in TBST. | Detection: ECL Basic Kit . | Exposure time: 60s.