

Product datasheet for TA378141S

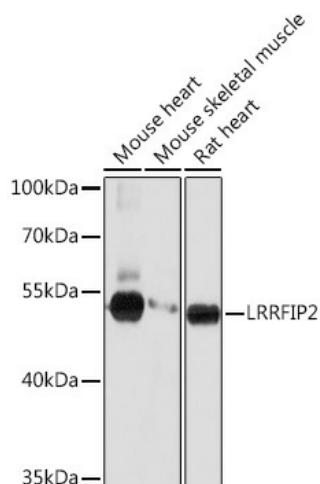
LRRFIP2 Rabbit Polyclonal Antibody

Product data:

Product Type:	Primary Antibodies
Applications:	ELISA, ICC/IF, WB
Recommended Dilution:	WB, 1:500 - 1:2000 IF/ICC, 1:50 - 1:200 ELISA, Recommended starting concentration is 1 µg/mL. Please optimize the concentration based on your specific assay requirements.
Reactivity:	Human, Mouse, Rat
Host:	Rabbit
Isotype:	IgG
Clonality:	Polyclonal
Formulation:	Buffer: PBS with 0.02% sodium azide, 50% glycerol, pH 7.3.
Concentration:	lot specific
Purification:	Affinity purification
Conjugation:	Unconjugated
Storage:	Store at -20°C. Avoid freeze / thaw cycles.
Stability:	Shelf life: one year from despatch.
Predicted Protein Size:	82kDa
Gene Name:	leucine rich repeat (in FLII) interacting protein 2
Database Link:	Entrez Gene 9209 Human Q9Y608
Background:	The protein encoded by this gene, along with MYD88, binds to the cytosolic tail of toll-like receptor 4 (TLR4), which results in activation of nuclear factor kappa B signaling. The ubiquitin-like protein FAT10 prevents the interaction of the encoded protein and TLR4, thereby inactivating the nuclear factor kappa B signaling pathway. In addition, this protein can downregulate the NLRP3 inflammasome by recruiting the caspase-1 inhibitor Flightless-1 to the inflammasome complex.
Synonyms:	DKFZp434H2035; FLJ20248; FLJ22683; FLJ58304; HUFI-2; OTTHUMP00000161359; OTTHUMP00000208872


[View online »](#)

Product images:



Western blot analysis of various lysates using LRRFIP2 Rabbit pAb (TA378141) at 1:1000 dilution.

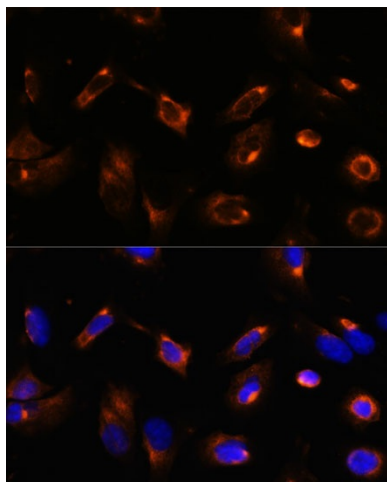
Secondary antibody: HRP-conjugated Goat anti-Rabbit IgG (H+L) (AS014) at 1:10000 dilution.

Lysates/proteins: 25µg per lane.

Blocking buffer: 3% nonfat dry milk in TBST.

Detection: ECL Basic Kit (RM00020).

Exposure time: 5s.



Immunofluorescence analysis of U-2 OS cells using LRRFIP2 Rabbit pAb (TA378141) at dilution of 1:100. Secondary antibody: Cy3-conjugated Goat anti-Rabbit IgG (H+L) (AS007) at 1:500 dilution. Blue: DAPI for nuclear staining.