

Product datasheet for **TA378141**

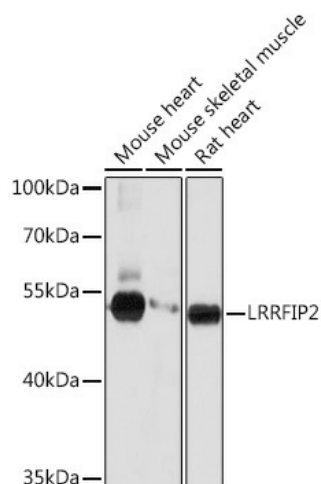
LRRFIP2 Rabbit Polyclonal Antibody

Product data:

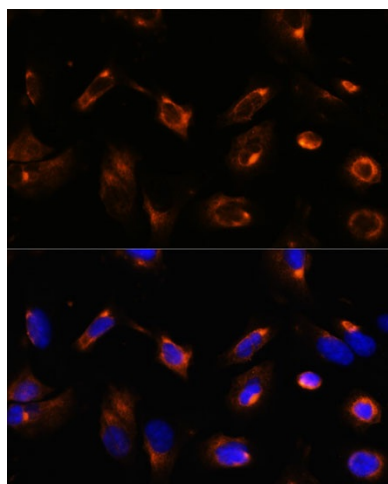
| | |
|-----------------------|--|
| Product Type: | Primary Antibodies |
| Applications: | ICC/IF, WB |
| Recommended Dilution: | WB,1:500 - 1:2000 IF,1:50 - 1:200 |
| Reactivity: | Human, Mouse, Rat |
| Host: | Rabbit |
| Isotype: | IgG |
| Clonality: | Polyclonal |
| Immunogen: | Recombinant fusion protein containing a sequence corresponding to amino acids 150-340 of human LRRFIP2 (NP_060194.1). |
| Formulation: | Buffer: PBS with 0.02% sodium azide,50% glycerol,pH7.3. |
| Concentration: | lot specific |
| Purification: | Affinity purification |
| Conjugation: | Unconjugated |
| Storage: | Store at -20°C. Avoid freeze / thaw cycles. |
| Stability: | Shelf life: one year from despatch. |
| Gene Name: | leucine rich repeat (in FLII) interacting protein 2 |
| Database Link: | Entrez Gene 9209 Human Q9Y608 |
| Background: | The protein encoded by this gene, along with MYD88, binds to the cytosolic tail of toll-like receptor 4 (TLR4), which results in activation of nuclear factor kappa B signaling. The ubiquitin-like protein FAT10 prevents the interaction of the encoded protein and TLR4, thereby inactivating the nuclear factor kappa B signaling pathway. In addition, this protein can downregulate the NLRP3 inflammasome by recruiting the caspase-1 inhibitor Flightless-I to the inflammasome complex. |
| Synonyms: | DKFZp434H2035; FLJ20248; FLJ22683; FLJ58304; HUFI-2; OTTHUMP00000161359; OTTHUMP00000208872 |



[View online »](#)

Product images:

Western blot analysis of extracts of various cell lines, using LRRFIP2 Rabbit pAb (TA378141) at 1:1000 dilution. | Secondary antibody: HRP Goat Anti-Rabbit IgG (H+L) at 1:10000 dilution. | Lysates/proteins: 25ug per lane. | Blocking buffer: 3% nonfat dry milk in TBST. | Detection: ECL Basic Kit . | Exposure time: 5s.



Immunofluorescence analysis of U-2 OS cells using LRRFIP2 antibody (TA378141) at dilution of 1:100. Blue: DAPI for nuclear staining.