

## Product datasheet for **TA378140**

### LRRFIP1 Rabbit Polyclonal Antibody

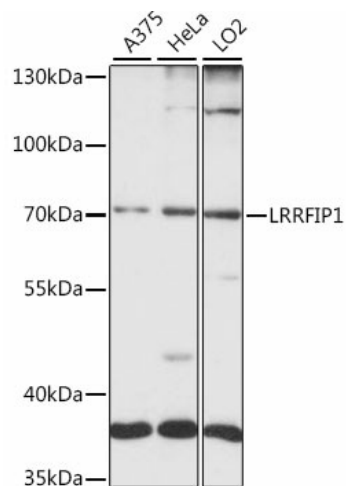
#### Product data:

Product Type:	Primary Antibodies
Applications:	WB
Recommended Dilution:	WB,1:500 - 1:2000
Reactivity:	Human
Modifications:	Unmodified
Host:	Rabbit
Isotype:	IgG
Clonality:	Polyclonal
Immunogen:	Recombinant fusion protein containing a sequence corresponding to amino acids 589-808 of human LRRFIP1 (NP_001131024.1).
Formulation:	Buffer: PBS with 0.02% sodium azide,50% glycerol,pH7.3.
Concentration:	lot specific
Purification:	Affinity purification
Conjugation:	Unconjugated
Storage:	Store at -20°C. Avoid freeze / thaw cycles.
Stability:	Shelf life: one year from despatch.
Predicted Protein Size:	73kDa/82kDa/86kDa/89kDa
Gene Name:	leucine rich repeat (in FLII) interacting protein 1
Database Link:	<a href="#">Entrez Gene 9208 Human Q32MZ4</a>
Background:	Transcriptional repressor which preferentially binds to the GC-rich consensus sequence (5'-AGCCCCCGCG-3' and may regulate expression of TNF, EGFR and PDGFA. May control smooth muscle cells proliferation following artery injury through PDGFA repression. May also bind double-stranded RNA. Positively regulates Toll-like receptor (TLR signaling in response to agonist probably by competing with the negative FLII regulator for MYD88-binding.
Synonyms:	FLAP-1; FLIAP1; GCF-2; GCF2; HUF1-1; MGC10947; MGC119738; MGC119739; TRIP



[View online »](#)

## Product images:



Western blot analysis of extracts of various cell lines, using LRRFIP1 antibody (TA378140) at 1:1000 dilution. | Secondary antibody: HRP Goat Anti-Rabbit IgG (H+L) at 1:10000 dilution. | Lysates/proteins: 25ug per lane. | Blocking buffer: 3% nonfat dry milk in TBST. | Detection: ECL Basic Kit . | Exposure time: 10s.